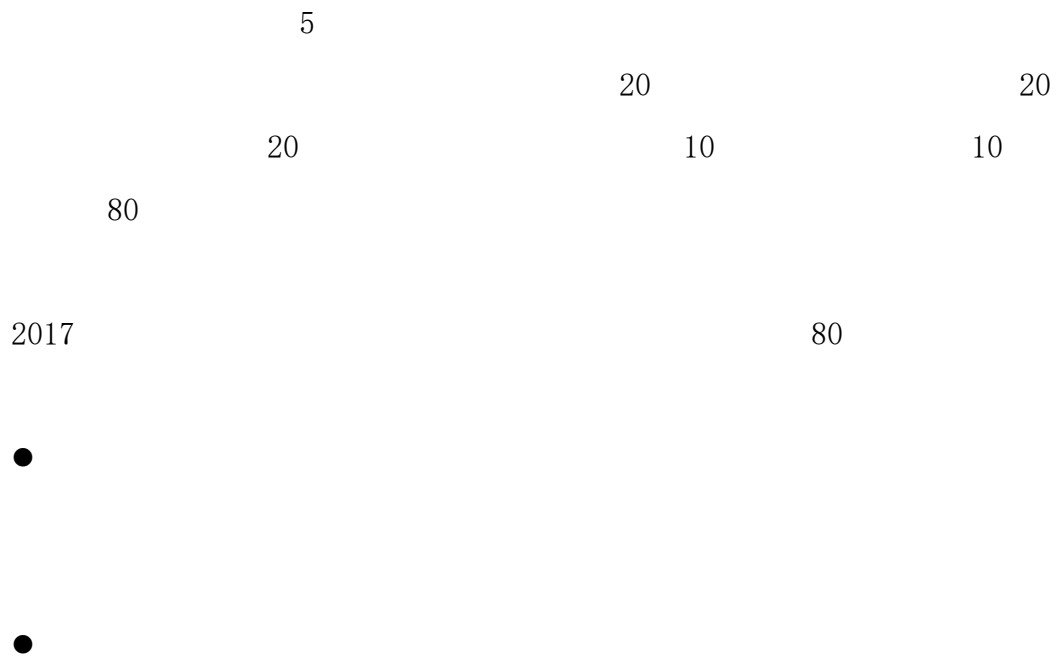


2017

2019 10



		.....	1
		.....	1
1.	1-1	.....	1
2.	1-2	.....	6
3.	1-3	.....	11
4.	1-4	.....	16
5.	1-5	.....	20
6.	1-6	.....	25
7.	1-7	.....	30
8.	1-8	.....	35
9.	1-9	.....	40
10.	1-10	.....	45
11.	1-11	.....	50
12.	1-12	.....	53
13.	1-13	.....	56
14.	1-14	.....	59
15.	1-15	.....	62
16.	1-16	.....	65
17.	1-17	.....	68
18.	1-18	.....	71
19.	1-19	.....	74
20.	1-20	.....	77
		.....	80
		.....	80
1.	2-1	.....	80
2.	2-2	.....	83
3.	2-3	.....	85
4.	2-4	.....	87
5.	2-5	.....	89
6.	2-6	.....	91
7.	2-7	.....	93

8.	2-8	.....	95
9.	2-9	.....	98
10.	2-10	.....	101
11.	2-11	.....	104
12.	2-12	.....	107
13.	2-13	.....	110
14.	2-14	.....	113
15.	2-15	.....	116
16.	2-16	.....	119
17.	2-17	.....	122
18.	2-18	.....	126
19.	2-19	.....	130
20.	2-20	.....	133
		.....	136
1.	3-1	.....	136
2.	3-2	.....	140
3.	3-3	.....	145
4.	3-4	.....	149
5.	3-5	.....	154
6.	3-6	.....	159
7.	3-7	.....	164
8.	3-8	.....	169
9.	3-9	.....	174
10.	3-10	.....	179
11.	3-11	.....	184
12.	3-12	.....	186
13.	3-13	.....	188
14.	3-14	.....	190
15.	3-15	.....	192
16.	3-16	.....	194
17.	3-17	.....	196
18.	3-18	.....	198
19.	3-19	.....	200
20.	3-20	.....	202

		.....	204
		.....	204
1.	4-1	.....	204
2.	4-2	.....	207
3.	4-3	.....	210
4.	4-4	.....	213
5.	4-5	.....	216
6.	4-6	.....	219
7.	4-7	.....	222
8.	4-8	.....	225
9.	4-9	.....	228
10.	4-10	.....	231
		.....	234
1.	5-1	.....	234
2.	5-2	.....	236
3.	5-3	.....	238
4.	5-4	.....	240
5.	5-5	.....	242
6.	5-6	.....	244
7.	5-7	.....	246
8.	5-8	.....	248
9.	5-9	.....	250
10.	5-10	.....	252

1. 1-1

1

33 2100 10 2010  
310 1995

1

3 5

1.2

1.2

2003

ABC

1

1



3

7

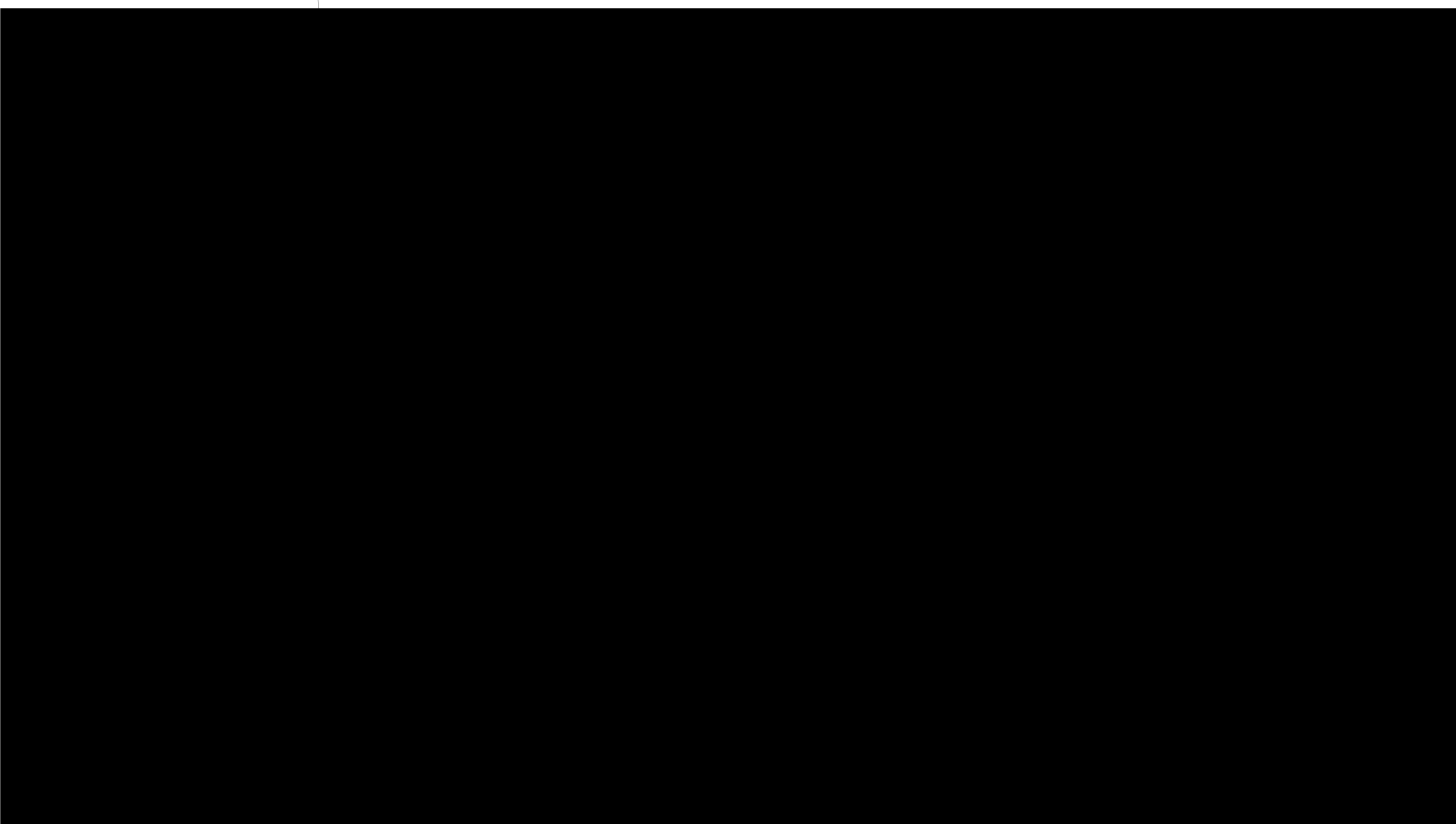
3

10

\*\*\*

10

2000



1-1

10		10	6S 0/3/5		
		0/3/5			
90	20			16-20	
				11-15	
				6-10	
				1-5	
				0	
	9			8-9	
				6-7	
				4-5	
				0-3	
		21	/	21	



			/	18	
			/	15	
			/	12	
			/	9	
			/	6	
			/	3	
				0	
		20	15		

			0/3/5	
		20	5                      5	
			6                                      4	
	100			

-

2. 1-2

1

2002

0-16

1

:// . .

4

2

3

3

7

\*\*\*

4

10

200

500

120

5

		( )	10%	(
	20%	800		80
	30%	112		11.2
	50%	88		8.8

A.

?

B.

2

7 8

0 2010

3

60

4

1-2

1-2

10		10	6S 0/3/5		
		0/3/5			
90	20			16-20	
				11-15	
				6-10	
				1-5	
				0	
	9			8-9	
				6-7	
				4-5	
				0-3	
		21	/	21	

			/	18	
			/	15	
			/	12	
			/	9	
			/	6	
			/	3	
				0	
		20	15		

			0/3/5	
		20	5                      5	
			6                                      4	
	100			

3. 1-3

1

14

4

DSR

1

14

://

34091294.

. /

14

4

2

14

14

3

70

14

7

\*\*\*

4

14

20

500

14

1500

14

350

5

14

		( )	10%	(
	20%	40000		4000
	30%	8000		800
	50%	2000		200

A.

?

B.

2



7 8

0 2010

3

60

4

1-3

1-3

6S

0/3/5

10

10

			/	18	
			/	15	
			/	12	
			/	9	
			/	6	
			/	3	
				0	
		20	15		

			0/3/5	
		20	5                      5	
			6                                      4	
	100			

4. 1-4

1 N F 1966

7 DSR

1 :// . .

2 4

3 3000

4 7 \*\*\*

4 20

500

1500

350

5

		( )	10% (
	20%	4000	400
	30%	800	80
	50%	200	20

- A. ?
- B.

2

7 8

0 2010

3

60

4

1-4

1-4

			6S 0/3/5		
10	10		0/3/5		
90	20			16-20	
				11-15	
				6-10	
				1-5	
				0	
	9				8-9
					6-7
					4-5
					0-3
	21		/		21
			/		18
			/		15

			/	12	
			/	9	
			/	6	
			/	3	
				0	
			15		
		20			
			0/3/5		
			5	5	
		20	6	4	
	100				



5. 1-5

1

200

DSR

1

:// 71054329. /

4

2

3

7

\*\*\*

4

30

5

2

20

15

5

		( )	10%	(
	20%	400		40
	30%	80		8
	50%	20		2

A.

?

B.

2

7 8

0 2010

3

60

4

1-5

1-5

			6S		
10	10		0/3/5		
			0/3/5		
90	20			16-20	
				11-15	
				6-10	
				1-5	
				0	
	9				8-9
					6-7
					4-5
					0-3
		21		/	21

			/	18	
			/	15	
			/	12	
			/	9	
			/	6	
			/	3	
				0	
		20	15		

			0/3/5	
		20	5                      5	
			6                                      4	
	100			

6. 1-6

1

DSR

1

:// 36830724. . /

4

2

3

7

\*\*\*

4

30

50

2

100

40

5

		( )	10%	(
	20%	400		40
	30%	80		8
	50%	20		2

A.

?

B.

2

7 8

0 2010

3

60

4

1-6

1-6

10		10	6S 0/3/5		
		0/3/5			
90		20		16-20	
				11-15	
				6-10	
				1-5	
				0	
		9		8-9	
				6-7	
				4-5	
				0-3	
		21	/	21	



			/	18	
			/	15	
			/	12	
			/	9	
			/	6	
			/	3	
				0	
		20	15		

			0/3/5	
		20	5                      5	
			6                                      4	
	100			

7. 1-7

1

DSR

1

:// . . /

4

2

3

R D

7

\*\*\*

4

50

60

2

80

40

5

		( )	10%	(
	20%	400		40
	30%	80		8
	50%	20		2

A.

?

B.

2

7 8

0 2010

3

60

4

1-7

1-7

				6S 0/3/5		
	10	10				
			0/3/5			
90		20		16-20		
				11-15		
				6-10		
				1-5		
				0		
		9		8-9		
				6-7		
				4-5		
				0-3		
		21		/	21	

			/	18	
			/	15	
			/	12	
			/	9	
			/	6	
			/	3	
				0	
		20	15		

			0/3/5	
		20	5                      5	
			6                                      4	
	100			

8. 1-8

1

4

DSR

1

://

.

./

4

2

3

4 6+128G

7

\*\*\*

4

10

50

1

2000

1200

5

		( )	10%	(
	20%	8000		800
	30%	1500		150
	50%	500		50

A.

?

B.



2

7 8

0 2010

3

60

4

1-8

1-8

				6S 0/3/5		
	10	10				
			0/3/5			
90		20		16-20		
				11-15		
				6-10		
				1-5		
				0		
		9		8-9		
				6-7		
				4-5		
				0-3		
			21	/	21	

			/	18	
			/	15	
			/	12	
			/	9	
			/	6	
			/	3	
				0	
		20	15		

			0/3/5	
		20	5                      5	
			6                                      4	
	100			

9. 1-9

1

3

DSR

1

:// . . /

4

2

3

5-6

7

\*\*\*

4

20

40

3

50

35

5

		( )	10%	(
	20%	400		40
	30%	80		8
	50%	20		2

A.

B.



1-9

				6S 0/3/5		
	10	10				
			0/3/5			
90		20		16-20		
				11-15		
				6-10		
				1-5		
				0		
		9		8-9		
				6-7		
				4-5		
				0-3		
		21		/	21	

			/	18	
			/	15	
			/	12	
			/	9	
			/	6	
			/	3	
				0	
		20	15		



			0/3/5	
		20	5                      5	
			6                                      4	
	100			

10. 1-10

1

5

DSR

1

:// . . /

4

2

3

H -704B

7

\*\*\*

4

5

50

1

200

50

5

		( )	10%	(
	20%	4000		400
	30%	800		80
	50%	200		20

A. ?

2

7 8

0 2010

3

60

4

1-10

1-10

10		10	6S 0/3/5			
		0/3/5				
90	20			16-20		
				11-15		
				6-10		
				1-5		
				0		
	9			8-9		
				6-7		
				4-5		
				0-3		
		21		/	21	

			/	18	
			/	15	
			/	12	
			/	9	
			/	6	
			/	3	
				0	
		20	15		

			0/3/5	
		20	5                      5	
			6                                      4	
	100			

11.

1-11

1

2

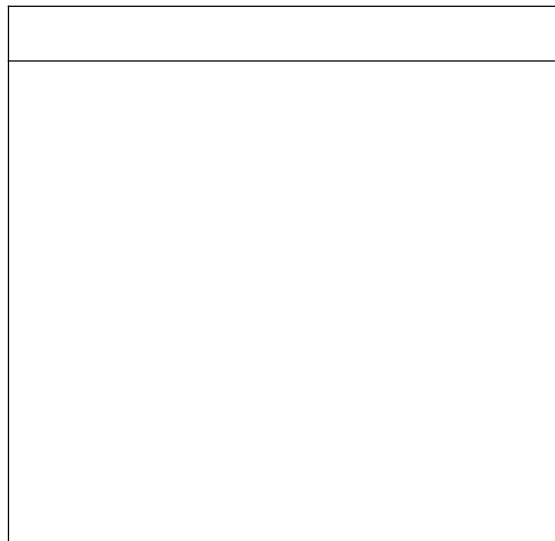
1	
1	
2	
2	
3	
3	
4	
4	
5	
5	

3

3

200

3



2

7 8 0 2010

3

60

4

1-11



10	10	6S	0/3/5
			0/3/5
90	25	5	
		16-20	
		11-15	
		6-10	
		0-5	
90	35	29-35	
		22-28	
		15-21	
		8-14	
		0-7	
		0/3/5	
90	30	18-25	
		10-17	
		0-9	
		100	

12. 1-12

1

2000 4 20

GSM TD-SCDMA 518

2011

500 87

50

30 15

15

1

1 40

1


2

:

7 21 30 15

11 12

11 12

11 12

2

2

1	
1	
2	

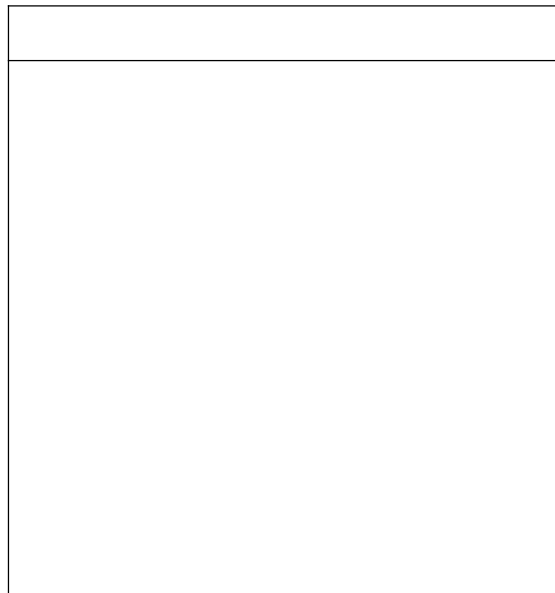
2	
3	
3	
4	
4	
5	
5	

3

3

200

3



2

7

8

0

2010

3

60

4

1-12

1-12

6S

0/3/5

10

10

10

13. 1-13

1

:// . . /

200

800

6 11

6 6

20

6 10

1145

6 8

6

8

6 10

6 8

1145

1

1

40

1


2

:

6 8

6 10

2

2

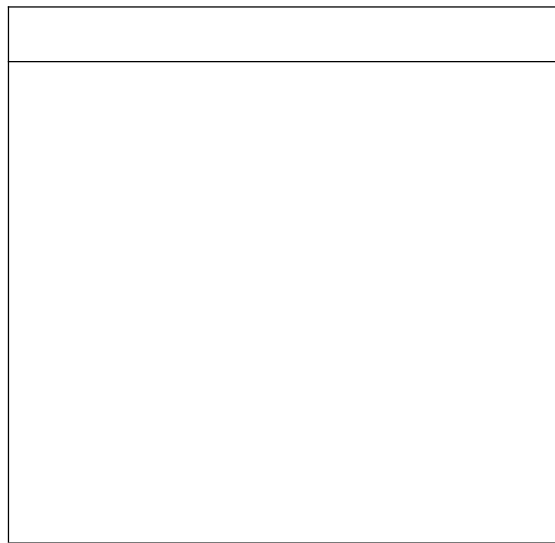
1	
1	
2	
2	
3	
3	
4	
4	
5	
5	

3

3

200

3



2

7 8

0 2010

3

60

4

1-13

1-13

10	10	6S	0/3/5
			0/3/5
90	25	5	
		16-20	
		11-15	
		6-10	
		0-5	
90	35	29-35	
		22-28	
		15-21	
		8-14	
		0-7	
		0/3/5	
90	30	18-25	
		10-17	
		0-9	
		100	

14. 1-14

1

4

5 2

5 6

1

1

40

1


2

:

2

2

1	
1	
2	
2	
3	
3	
4	
4	



5	
5	

3

3

200

3


2

7 8

0 2010

3

60

4

1-14

10	10	6S	0/3/5
			0/3/5
90	25	5	
		16-20	
	35	11-15	
		6-10	
30	0-5		
	29-35		
	22-28		
	15-21		
		8-14	
		0-7	
		0/3/5	
	18-25		
	10-17		
	0-9		
	100		

15. 1-15

1

2015 3 17

198

32G U 3 19

U

U

1G

32G

1

1

40

1


2

U

32G U

1G

2

2

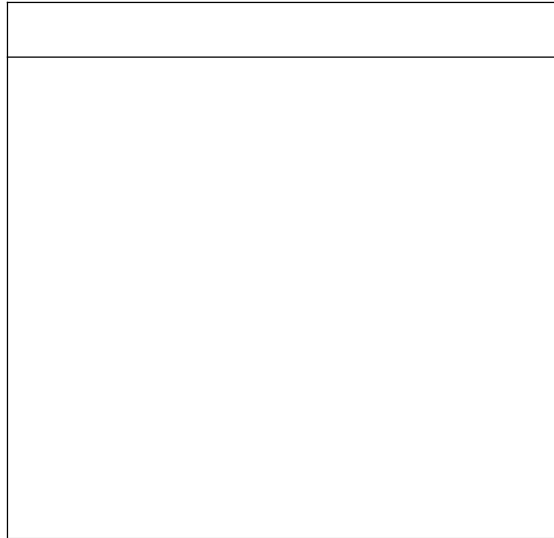
1	
1	
2	
2	
3	
3	
4	
4	
5	
5	

3

3

200

3



2

7

8

0

2010

3

60

4

1-15

1-15

6S



0/3/5/3/5

10

10

16. 1-16

1

( :// . . . /)

5

2018 2 6

200

2

1

1

40

1


2

2

2

2

1	
1	
2	
2	
3	
3	
4	

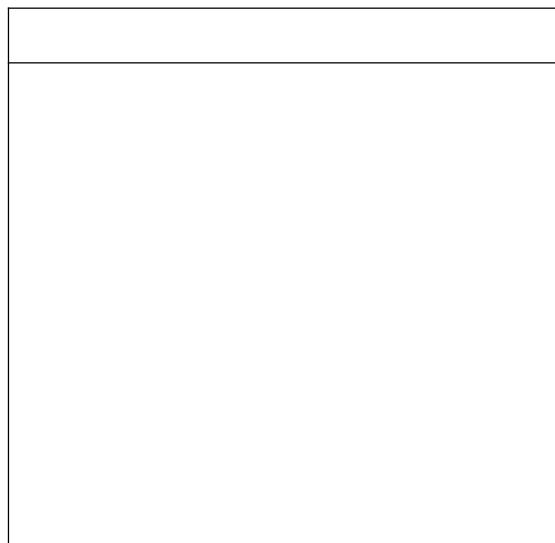
4	
5	
5	

3

3

200

3



2

7

8

0

2010

3

60

4

1-16

1-16

10	10	6S	0/3/5
			0/3/5
	25	5	
		16-20	
90	35	11-15	
		6-10	
		0-5	
	35	29-35	
		22-28	
		15-21	
		8-14	
		0-7	
		0/3/5	
	30	18-25	
		10-17	
		0-9	
		100	



17. 1-17

1

B2C

+

199 /

4

4

199

1

1

40

1


2

2

2

1	
1	
2	
2	
3	
3	
4	
4	

5	
5	

3

3

200

3


2

7

8

0

2010

3

60

4

1-17

10	10	6S	0/3/5
			0/3/5
90	25	5	
		16-20	
	35	11-15	
		6-10	
30	0-5		
	29-35		
	22-28		
	15-21		
		8-14	
		0-7	
		0/3/5	
		18-25	
		10-17	
		0-9	
		100	

18. 1-18

1

1999

17

25000

2003 12

9000

2015 10 26

2015 12 15

2015 12 25

28445467318

(12

25 )

( )

1

1

40

1


2

12 25

2

2

1	
1	
2	
2	
3	
3	
4	
4	
5	
5	

3

3

200

3


2

7

8

0

2010

3

60

4

1-18

10	10	6S	0/3/5
			0/3/5
90	25	5	
		16-20	
	35	11-15	
		6-10	
30	0-5		
	29-35		
	22-28		
	15-21		
		8-14	
		0-7	
		0/3/5	
		18-25	
		10-17	
		0-9	
		100	

19.

1-19

1

100%

150

1000

1

1

40

1


2

150

1

1000

2

2

1	
---	--

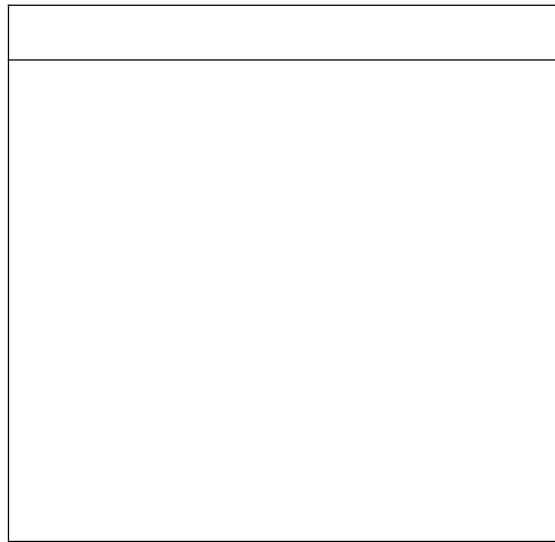
1	
2	
2	
3	
3	
4	
4	
5	
5	

3

3

200

3



2

7 8

0 2010

3

60

4

1-19



1-19

10	10	6S	0/3/5
			0/3/5
	25	5	
		16-20	
90	35	11-15	
		6-10	
		0-5	
	35	29-35	
		22-28	
		15-21	
		8-14	
		0-7	
	30	0/3/5	
		18-25	
		10-17	
		0-9	
		100	

20. 1-20

1

:// . . / 2014 4

0 12

APP 2019 3 2

150

1

1

40


1

2

2016 3 2

150

2

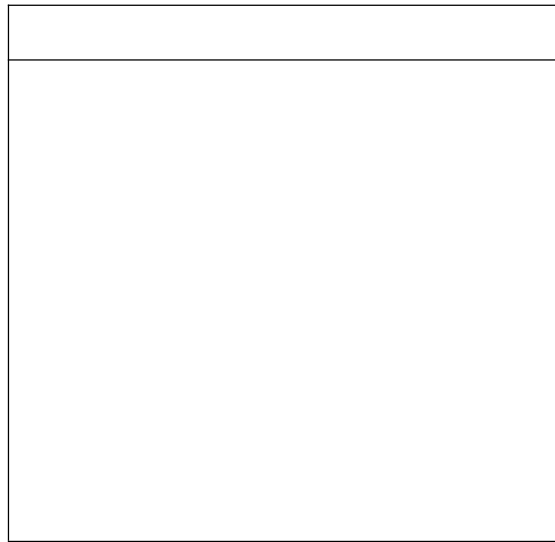
2

1	
---	--

1	
2	
2	
3	
3	
4	
4	
5	
5	

3

3                      200  
3



2

7    8                      0    2010

3

60

4

1-20

1-20

10	10	6S	0/3/5
			0/3/5
90	25	5	
		16-20	
	35	11-15	
		6-10	
30	29-35		
	22-28		
	15-21		
	8-14		
		0-7	
		0/3/5	
	30	18-25	
		10-17	
		0-9	
		100	

1. 2-1

1  
B N

58 /

950 400

. . . 1.  
2. 3.

1

. . .

100KB

2

P 7 8 0 20010  
3 CS6.0  
4 60  
( 2-1)

S

2. 2-2

1

1860 /

3

150

30

50

6

1

950

350

.

.

1.

2.

3.

1

.

.

.

100KB

2

7 8

0 2010

P

CS6.0

3

60

4

( 2-2)



(2-2)

(10 )	10	5	6S PSD
	5	3	2
	10	5	5
	20	10	5
	25	5	5
(90 )	10	5	3
	10	5	3
	5	1	2
	5	2	2
	100		

3.

2-3

1

950

400

1

100KB

2

7 8

0 2010

P

CS6.0

3

60

4

( 2-3)

(2-3)

4. 2-4

1

+

950 350

1.

2.

1

100KB

2

7 8 0 2010  
CS6.0

P  
3

60

4

( 2-4)

(2-4)

(10 )	10	5	6S PSD
	5	3	2
	10	5	5
	20	10	5
	25	5	5
(90 )	10	5	3
	10	5	3
	5	1	2
	5	2	2
	100		

5. 2-5

1

790

72 /

/

3

3

.PSD

.JPG

2

7 8

0 2010

P

CS6.0

3

60

4

( 2-5)

(2-5)

6S

(10 )

10

5

PSD

5

15

3

4

3 /

12

3

(90  
)

I2





(2-6)

(10 )	10	5 6S PSD	5
(90 )	15	3 4	3 /
	12		3 /
	15	1 0-5 2 2 6-10 3 3	3 3 3 11-15
	10	5	3 2
	15		5 5 5
	8	4	0 /2 /3 /4 /5 4
	5		0 /2 /3 /4 /5
	10		2 6
		100	2



2-7

(10 )	10	5 6S PSD	5
(90 )	15	3 4	3 /
	12		3 /
	15	1 0-5 2 2 6-10 3 3	3 3 3 11-15
	10		3 5 2
	15		5 5 0 /2 /3 /4 /5
	8		4
	5		4
	10		0 /2 /3 /4 /5 2 6
		10	2
	100		

8. 2-8

1

L B

1) L

80 80 80 /

L .PSD

.JPG

JPG

150K

2) B

1920 500 100 /

1. 2 .

B

B

B

L

.PSD

.JPG

JPG

150K

3)

2

800 800 72 /

\* \*

1. 2.

3M

2

7 8 0 2010

P

CS6.0

3

60

4

( 2-8)

(2-8)

			6S			5
(10 )	10					PSD
				5		
L	18				2	
	4					
		2				
	10				5	
			5			
	4			2		2
B	30					
	4				2	
		2				
	8		5			

(90  
)

9. 2-9

1

SK-II

L B  
1) L

80 80 80 /

.JPG .PSD  
150K JPG

2) B  
1920 500 100 /

B  
B L

.JPG .PSD  
150K JPG

3) 2  
800 800 72 /

\* \*

1. JPG 2. JPG

3M

2

7 8

0 2010

P

CS6.0

3

60

4

( 2-9)



(2-9)

(10 )	10	6S 5 PSD 5	5
<b>L 18</b>			
	4	2	2
	10	5	
	4	2	2
<b>B 30</b>			
	4	2	
	8	5	3
	14	B L 2 3 3	3
	4	2	2
(90 )	<b>42</b>		
	4	2	
	14	2 3 2	
		7 2 14	
	16	3 5 8 2 16	
	8	2 4 2 8	2
	100		

10. 2-10

1

L B

1) L

80 80 80 /

L

. PSD

. JPG

JPG

150K

2) B

950 120 100 /

B

B

B

L

. PSD

. JPG

JPG

150K

3)

2

800 800 72 /

\* \*

1. JPG

2. JPG

3M

2

7 8 0 2007 P  
CS6.0  
3  
4  
60  
( 2-10)

(2-10)

6S

5

(10 ) 10

PSD

el ³

11. 2-11

1

778

76

B

P

1

P

2

1

K



1

P

1

2

MM

K

.

U .

.

.

CSS

.

CSS

12

#CC0000

2

7 8

0 2010

P

CS6.0

D

2-11

(10 )	10	5	6S
			5
B	12	2	2
		2	4 2
	10	2	5
	10		3
			4
	8	K	2
		2	2
(90 )	10	7	3
	15	5	5
		5	
	10		4
CSS	15		5
		5	5
	100		

12.

2-12

1

1



1

1. 1. 1. 1.

1

2. 3. 4. 3.

1

5. 6. 4.

4.

4.

. 1. 3. 4.

LVSEHPIN

ISHIGAODIAN

BINFENSHIJIE



16 :// . . . . .  
: B . . . . . CSS  
1.5 : . . . . .  
K  
2  
7 8 0 2010  
P CS6.0 D CS6  
3  
60  
4  
( 2-12)

2-12

(10 )	10	5	6S
			5
B	10	L	5 5
	8	1	5
		3	
	15		3 9
			3 3
		3	
	10		2 4
			6 0
	10		4 0-6
(90 )	10		2 4
			2 5
	17	:	5 :
			5
	10	K	2
			3
		2	3
	100		

13. 2-13

1

M T

200\*120

N C S

MITING

1

L



[首页](#)

[关于我们](#)

[公司产品](#)

[联系我们](#)



新品上市

护肤系列

彩妆系列



©版权所有 米婷日化公司 QQ交谈

1

CSS

CSS

CSS

24

#990000

CSS

1

2

3

150

120

1

10



1

K

2

7 8

0 2010

P

CS6.0

D

CS6

3

60

4

( 2-13)

2-13

(10 )	10	5	6S
			5
	10	2	2
		2	2
		2	
	15	0-9	9-12
		12-15	
	16	2	2
			2
C	20		3
			3
(90 )	5		
			5
	14		3
		3	3
			3
	10	K	2
			3
		2	3
	100		

14. 2-14

1

H S D

LOGO

H S D

: . . . . . 1. 2. 3.  
 4. . . . . 12  
 173 404

1. 1. 1.  
 1. 1. 1.

1.

1 4

2. 3.

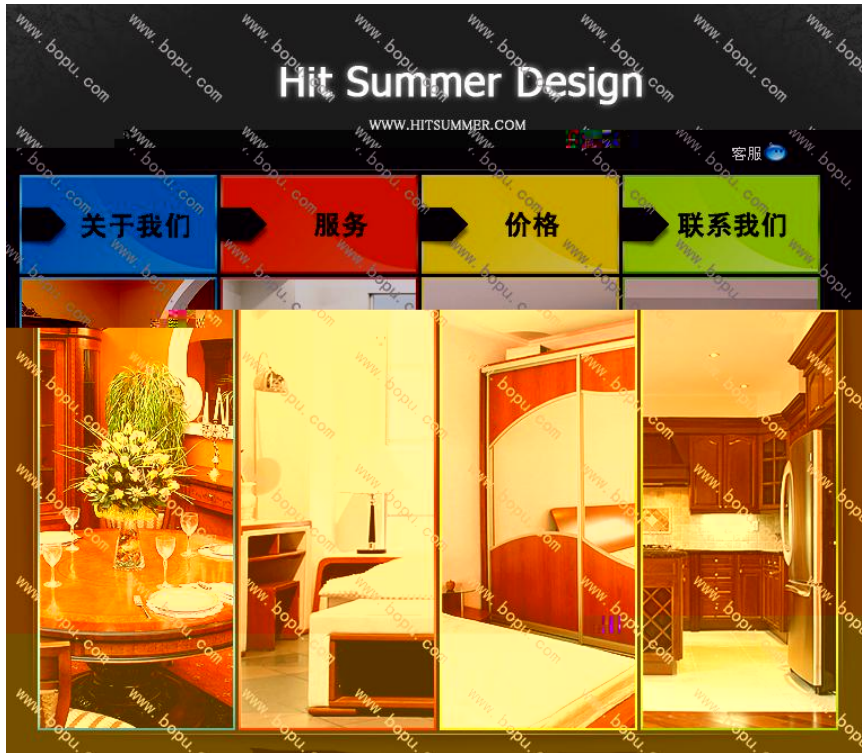
#FF4615

#0887DE

#FDE52A

#B9EE13





1

K

:// . . / :// . . . / :// . . . /

2

7 8 0 2010

P CS6.0 D CS6

3

60

4

( 2-14)

2-14

(10 )	10	5	6S
			5
L	6	LOGO	0-2 /3-4 /5-6 H S D 0
	12	1	
	18	2	2
	20	0-1 /2-3 /4	4
(90 )	14	0-10	2 2
	4	2	2
	8	K	2 2
	8	2	2
	8		2
	100		



15. 2-15

1

1

1. 2. . .

700 230



1

1

1.

4.

1

2

#FF0000

#FFFFFF

3

4

1

.

#CCCCCC

K

1.

:// . . /

2

7

8

0

2010

P

CS6.0

D

CS6

3

60

4

( 2-15)

2-15

(10 )	10	5	6S
			5
B	16	2	0 /1-3 /4-5 0/1-3/4-5
			2 0-2 /3-4
	20	1	4 2 0 /1 1 2
	29		0-15 2 2 12
(90 )	6	2	2 2
	10		K 2 3 2 3
	9		5 2
	100		

16.

2-16

1

800          200          B                  1.

.                  .

. G          -II.

1.          2.

1.

.          B                  1

1

3 J          4 J

1.          2.          3.          4.

198          70

<                  =”          ”><                  =”                  ”></                  >

1

K



1

2

7 8 0 2010

P CS6.0 D CS6

3

60

4

( 2-16)

2-16

(10 )	10	6S 0 /3 /5  0 /3  /5	
(9 0 )	15	LOGO 2  3 B 2 3	
	10	2 2 4 2	
	20	5 10 1	
	7	3 4	
	20	2 5 0-5	
	8	3 5	
	10	K 3 2 3	2
	100		

17. 2-17

1

SKINFOOD

01.

LOGO

SKINFOOD

A

24

-45

10

01

04.

04

-2.

400

350

01

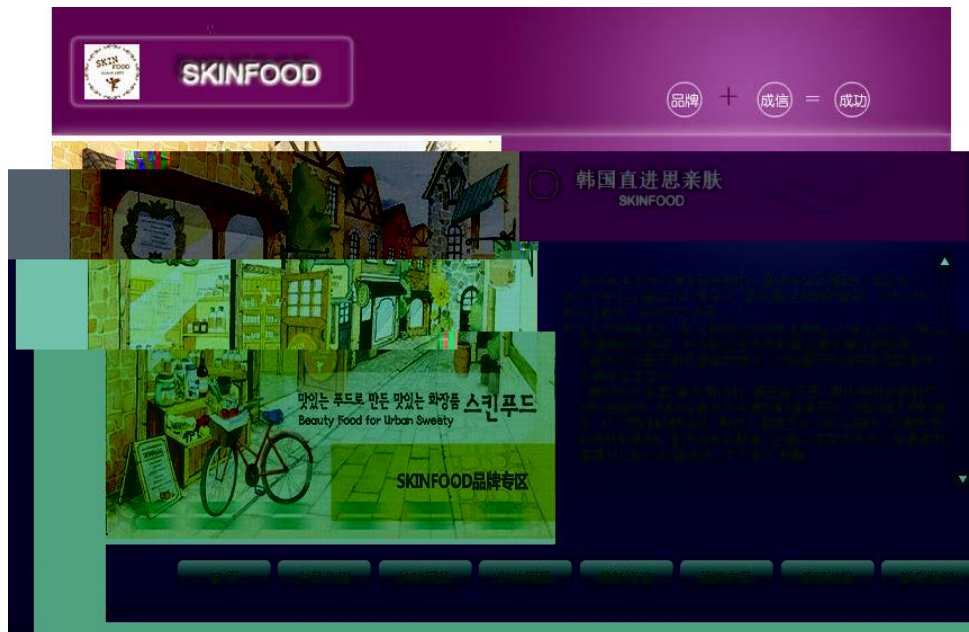
04

01.

04.

-2.

1



1

3.

3.

1000

540

2

1.

2.

490

450

2.

1.

2.

2

DIV

1.

2.

2

1.



1.

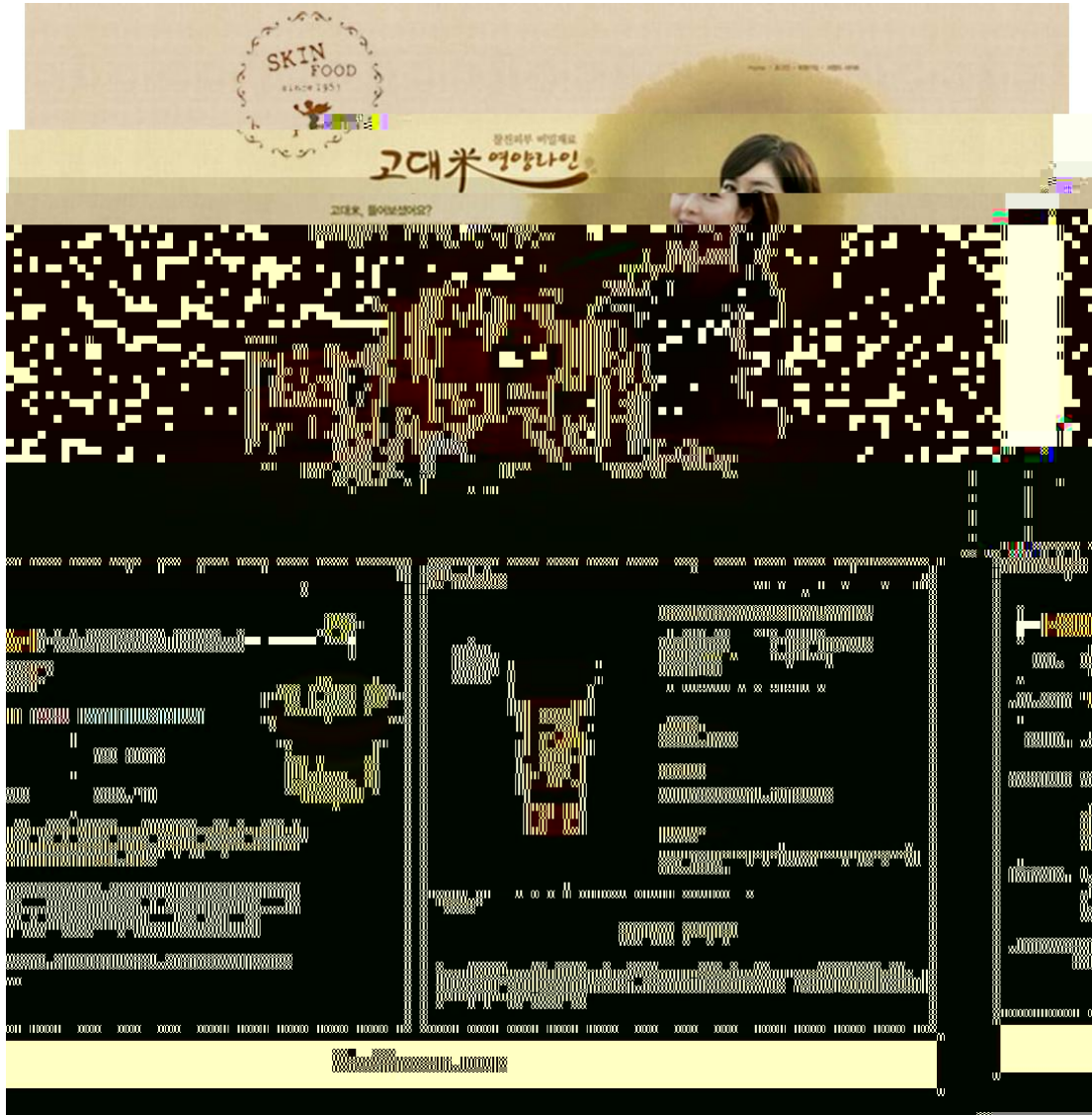
2.

1

50

#DBCAAC

#623F23





2

9

K

2

7 8

0 2010

P

CS6.0

D

CS6

3

60

4

( 2-17)

2-17

(10 )	10	5	6S
			5
LOGO	13	2	
		3	
		2	2
	9	2	3 2
		2	
	5	3	2
	5	1	3
	12	2	LOGO 5
		3	
(90 )		2	
	10		2 1
		3 2	3
	20	5	2 2
		6	
	6	K	1
		2	
		1	2
	10	5	5
	100		

18.

2-18

1

01.

18

01 .

4

-1.

-1.

. /

01 .

4

24.

27.

29.

31.

24.

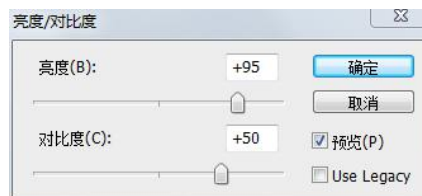
1



1

27.

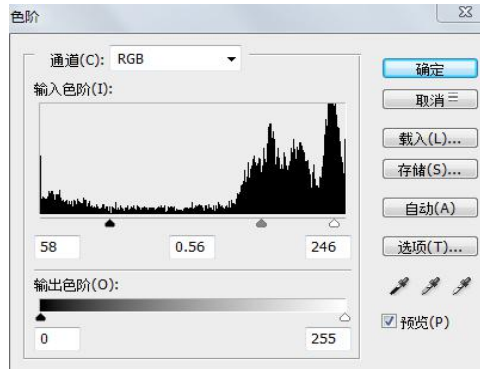
2



2

29.

3



3

29. . 24. 27.  
31. 01. .

B

4

12

2

16

2

4



4

K

2

P 7 8 0 2010  
 CS6.0 D CS6  
 3  
 60  
 4  
 ( 2-18)

2-18

(10 )	10	5	6S
			5
(90 )	L	12	2 3
			2 1
	B	16	4 4
			2 3
		14	2 2
		4	2
		8	2 2
		16	3 3
		12	2 10
		8	K 2
		2	2
	100		

19.

2-19

1

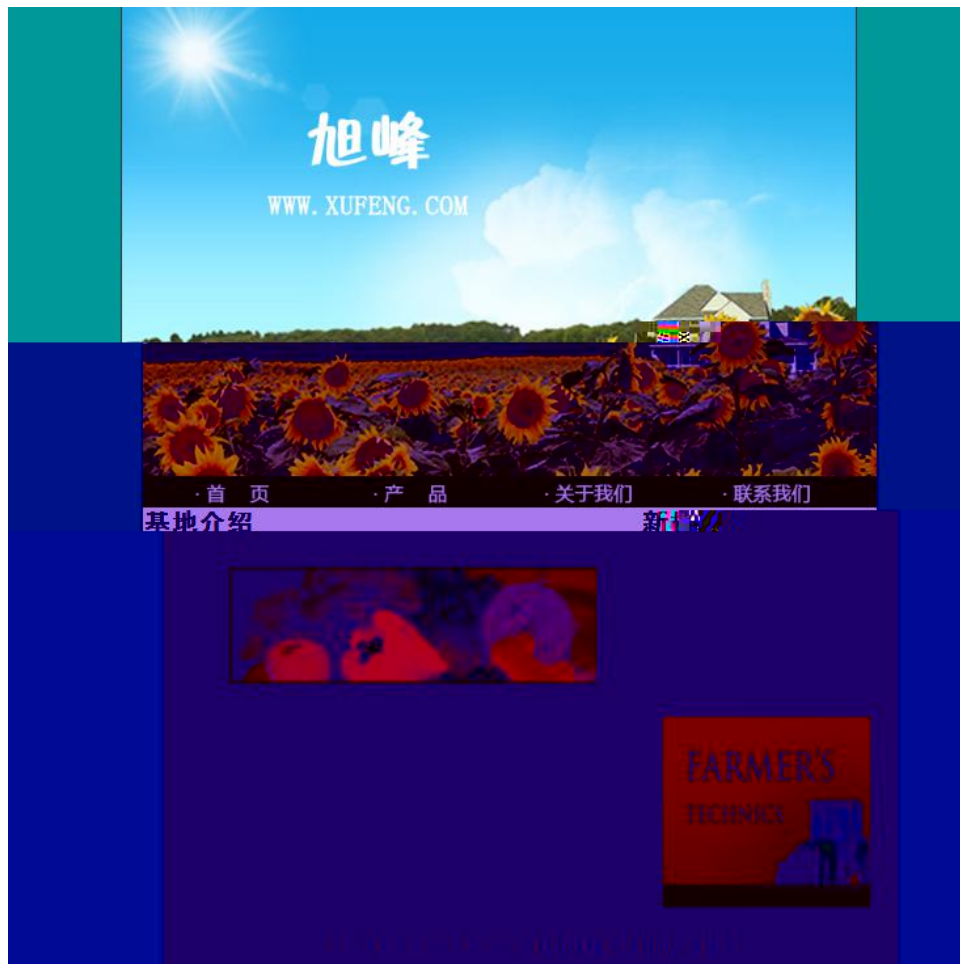
.TTF

1

700\*450

350

110



1

2 4

170 30

1.

2.

3.

4.

· PRODUCT

2

1

CSS

.

CSS

14

1.5

1

14

24

2

.

.

.

.

#009999

K

2

7 8

0 2010

P

CS6.0

D

CS6



2-19

			6S			
(10 )	10	5				
				5		
(90 )	B	13	3	2	2	
			2	2	2	
		4	2	2		
		12	3			
		6		1		
		10	5	5		
	CSS	17		5		
			6			
		16	2	2		
		4	2	2		
	8	K		2		
			2			
		2	2			
	100					

20.

2-20

1

1- 6 400\*300

#000000

#FF0000

B 1 B 2

6 2 3

200\*150 1

1 #1E6E87 150 20

#1E6E87 50 20

K



1

2

P 7 8 0 2010  
CS6.0 D CS6

3

60

4

( 2-20)

2-20

(10 )	10	5	6S
			5
	10	3	4
		3	
	18	1	2
	8	2	2
		2	2
	22	5	5 2 3 5
		5	2
(90 )	18	3	9
		3	3
	6		3
		3	
	8	K	2
			2
		2	2
	100		

1. 3-1

1  
1

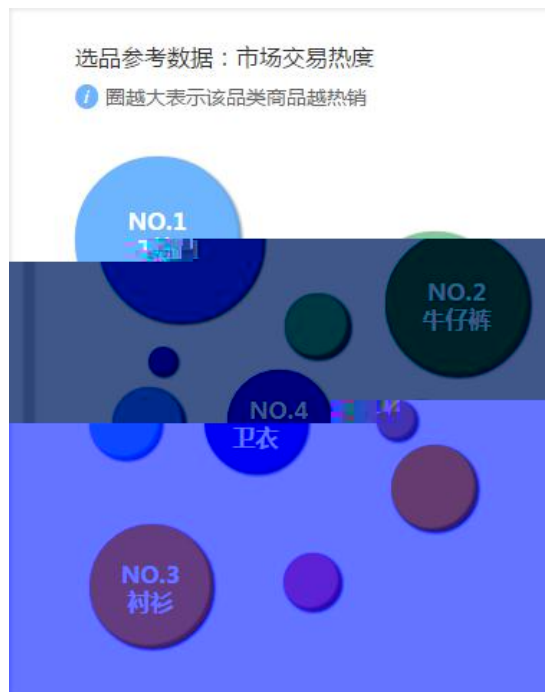
200

2

4

T

T



3

The screenshot displays a procurement system interface with a dark background. It features several rows of pricing information for different categories of goods. Each row includes a category name, a quantity range, and a unit price. The categories shown are 衬衫 (Shirts), T恤 (T-shirts), and 牛仔裤 (Jeans). The pricing tiers are as follows:

Category	Quantity Range	Unit Price
衬衫	1-1000件	195元/件
	1001-2000件	190元/件
	2001-3000件	185元/件
	3001-4000件	180元/件
T恤	1-1000件	160元/件
	1001-2000件	155元/件
	2001-3000件	150元/件
	3001-4000件	145元/件
牛仔裤	1-1000件	270元/件
	1001-2000件	265元/件
	2001-3000件	260元/件
	3001-4000件	255元/件

5

APP

6

200

1

2

	172.16.0.131/	
	48	
	3 1	

3

90

10	10	6S 3 /3 /4	
90	10	A 2 2 2 4	
	10	5 5	
	10	5 2 3	
	APP	5 10	
	15	5 10	
	10	5 5	
	10	5 3 2	
	10	5 5	
	100		

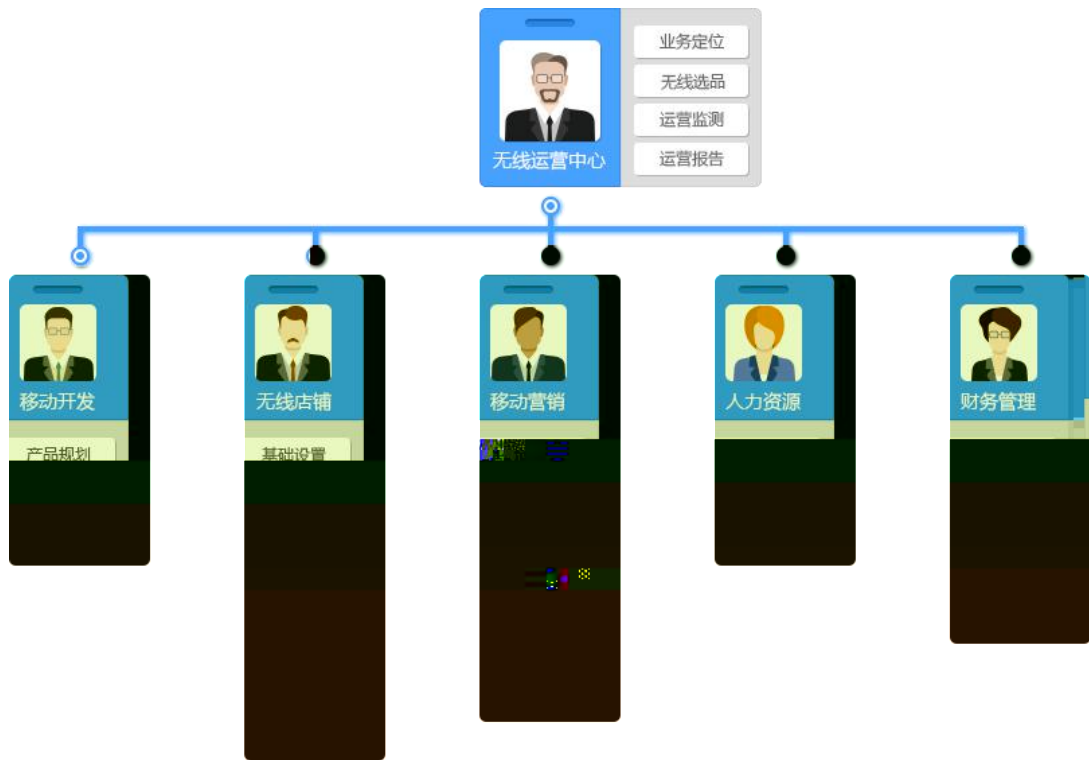


2.

3-2

1  
1

200



2

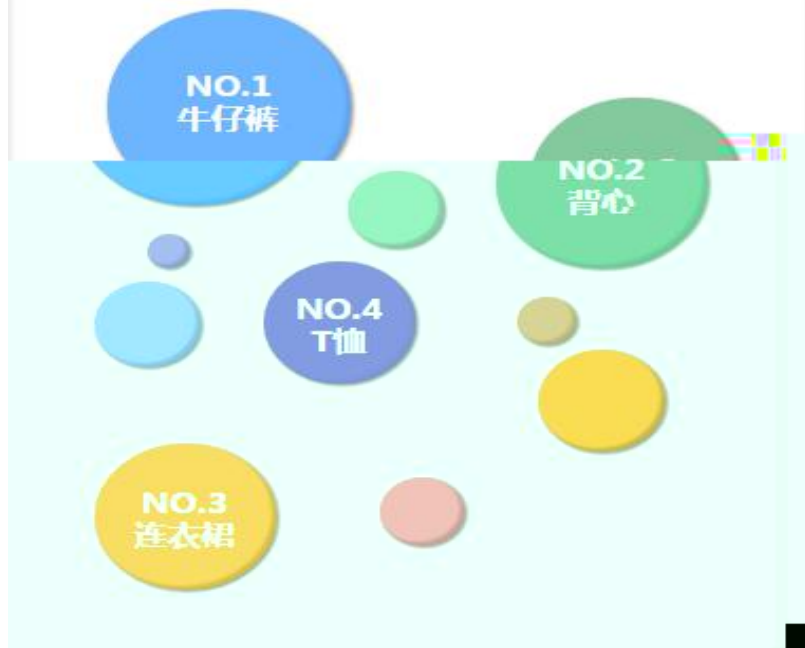
4

T

T

选品参考数据：市场交易热度

 圈越大表示该品类商品越热销



318元/件	连衣裙	采购量 1-1000件 325元/件	采购量 2001-2000件 325元/件	采购量 2001-3000
303元/件		采购量 3001-4000件 313元/件	采购量 4001-5000件 308元/件	采购量 5000件以
30元/件	背心	采购量 1-1000件 100元/件	采购量 1001-2000件 95元/件	采购量 2001-3000
75元/件		采购量 3001-4000件 85元/件	采购量 4001-5000件 80元/件	采购量 5
270元/件	牛仔裤	采购量 1-1000件 280元/件	采购量 1001-2000件 275元/件	采购量 20
235元/件		采购量 3001-4000件 263元/件	采购量 4001-5000件 260元/件	采购量 500
140元/件	T恤	采购量 1-1000件 150元/件	采购量 1001-2000件 145元/件	采购量 2001
125元/件		采购量 3001-4000件 135元/件	采购量 4001-5000件 130元/件	采购量 5

4)

5

APP

6

200

14

I

“

-

1

4

” )

8 1

” 1

\*

J ”

3-2

10	10	6S 3 /3 /4	
90			
		10	A 2 2 2 4
		10	5 5
		10	5 2 3
	APP	15	5 10
		15	5 10
		10	5 5
		10	5 3 2
		10	5 5
		100	

3.

3-3

1  
1

200

2

4



3

The screenshot displays a procurement system interface with a grid of items. Each item is represented by a small icon, a name, and a table of purchase volume ranges and unit prices. The items shown are:

- 电脑包 (Computer Bag):**
  - 采购量 1-1000个: 100元/个
  - 采购量 1001-2000个: 95元/个
  - 采购量 2001-3000个: 90元/个
  - 采购量 3001-4000个: 85元/个
  - 采购量 4001-5000个: 80元/个
  - 采购量 5000个以上: 75元/个
- 女包 (Women's Bag):**
  - 采购量 1-1000个: 300元/个
  - 采购量 1001-2000个: 295元/个
  - 采购量 2001-3000个: 290元/个
- 旅行箱 (Travel Bag):**
  - 采购量 1-1000个: 500元/个
  - 采购量 1001-2000个: 495元/个
  - 采购量 3001-4000个: 485元/个
  - 采购量 4001-5000个: 480元/个
  - 采购量 5000个以上: 475元/个
- 其他物品 (Other Items):**
  - 采购量 1-1000个: 100元/个
  - 采购量 1001-2000个: 95元/个
  - 采购量 2001-3000个: 90元/个
  - 采购量 3001-4000个: 85元/个
  - 采购量 4001-5000个: 80元/个
  - 采购量 5000个以上: 75元/个

4

5

APP

6

200

1

2

	172.16.0.131/	
	48	
	3 1	

3

90

4

3-3



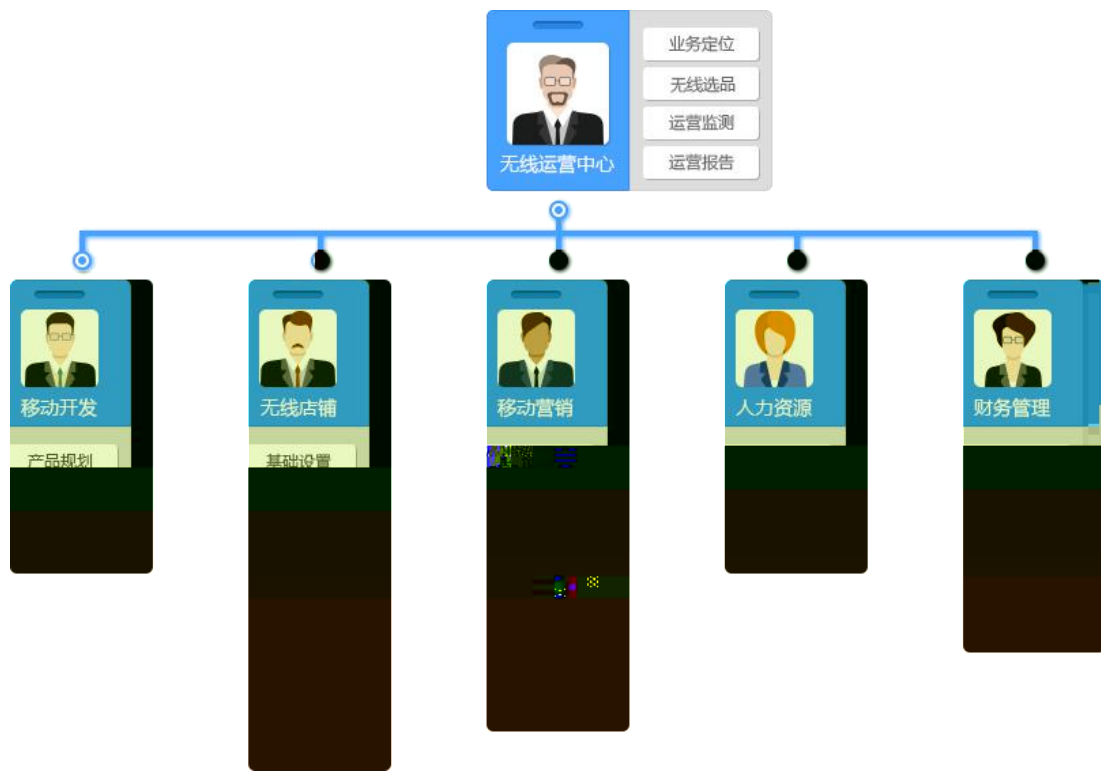
3-3

10	10	6S 3 /3 /4	
90			
		10	A 2 2 2 4
		10	5 5
		10	5 2 3
	APP	15	5 10
		15	5 10
		10	5 5
		10	5 3 2
		10	5 5
		100	

4. 3-4

1  
1

200



2

4

选品参考数据：市场交易热度

① 圈越大表示该品类商品越热销





4



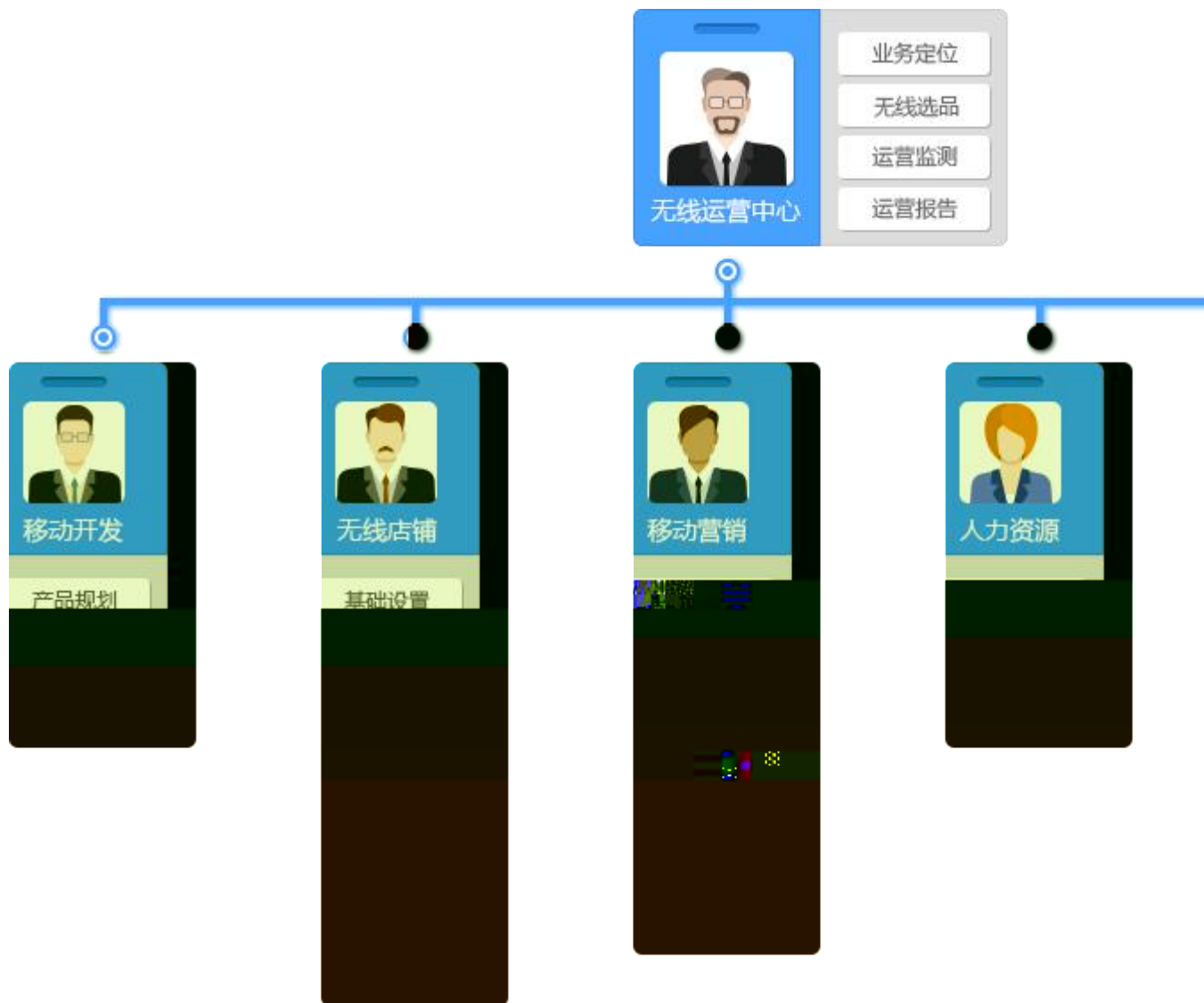
3-4

10	10	6S 3 /3 /4		
90	10	A	2 2 2 4	
		10	5 5	
			5	
	10	2	3	
		5	10	
		5	5	
	APP	15	5 10	
		15	5 10	
		10	5 5	
		10	5 3 2	
	10	5 5		
	100			

5. 3-5

1  
1

200



2







4

5

APP

6

200

2

	172. 16. 0. 131/	
		48
		3 1

3

90

4

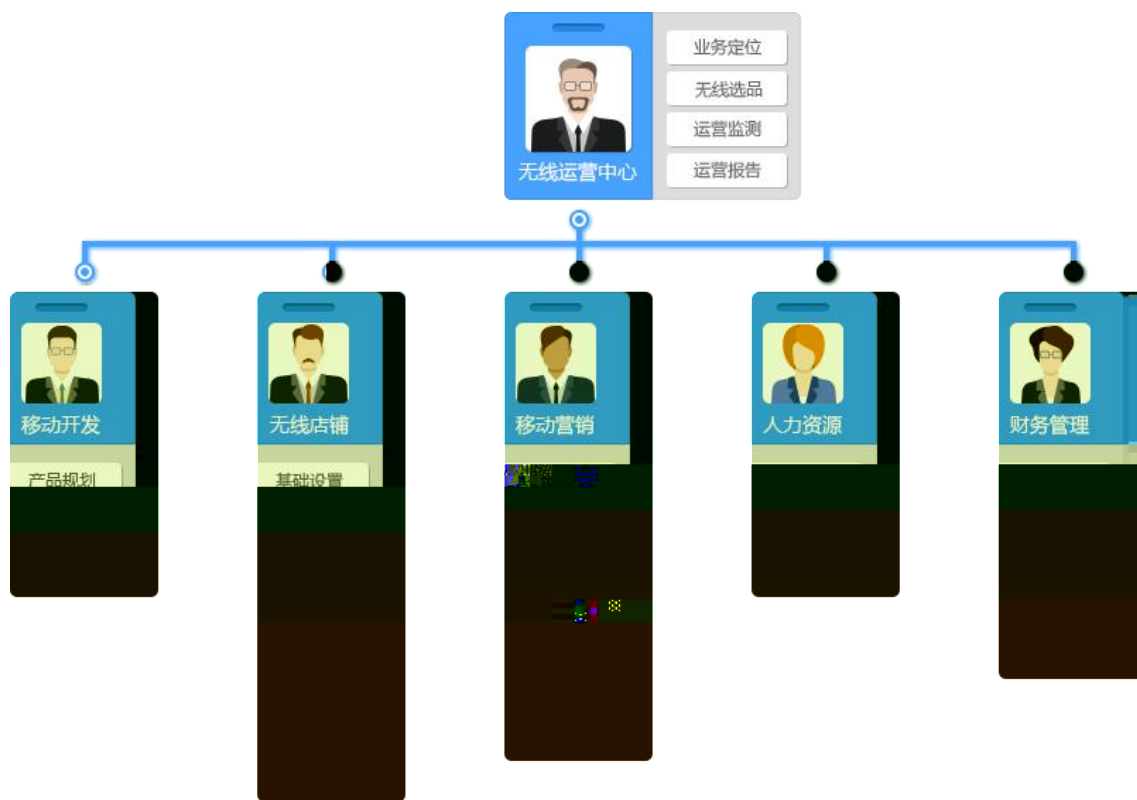
3-5

10	10	6S 3 /3 /4	
90	10	A 2 2 2 4	
	10	5 5	
	10	5 2 3	
	APP	15	5 10
		15	5 10
		10	5 5
		10	5 3 2
		10	5 5
		100	

6. 3-6

1  
1

200

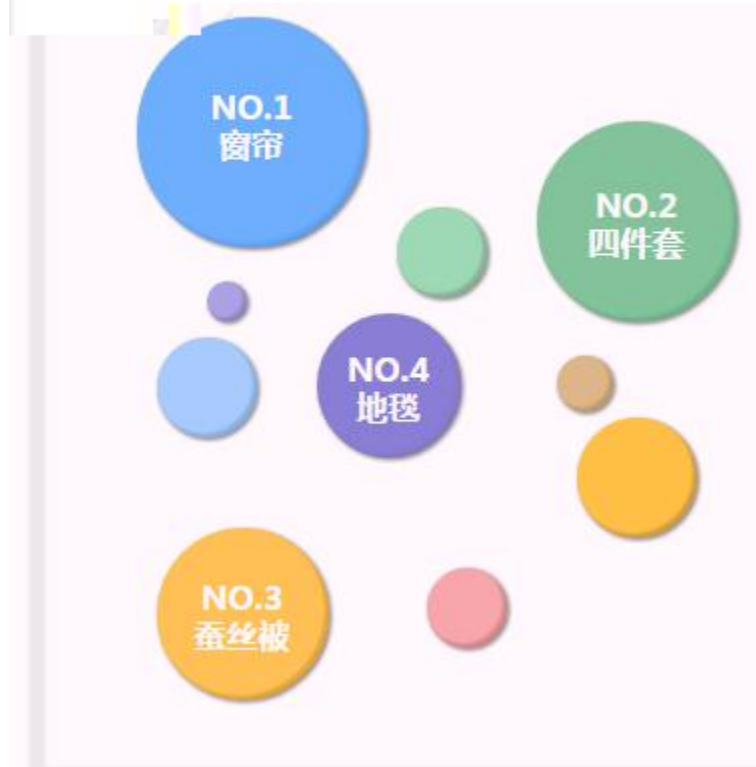


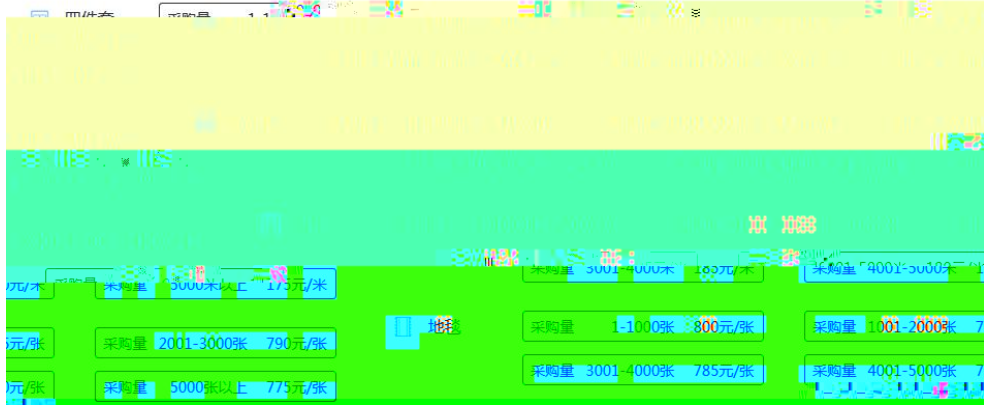
2

4

选品参考数据：市场交易热度

 圈越大表示该品类商品越热销





4

5

APP

6

200

1

2

	172. 16. 0. 131/	
		48
		3
		1

3

90

4

3-6

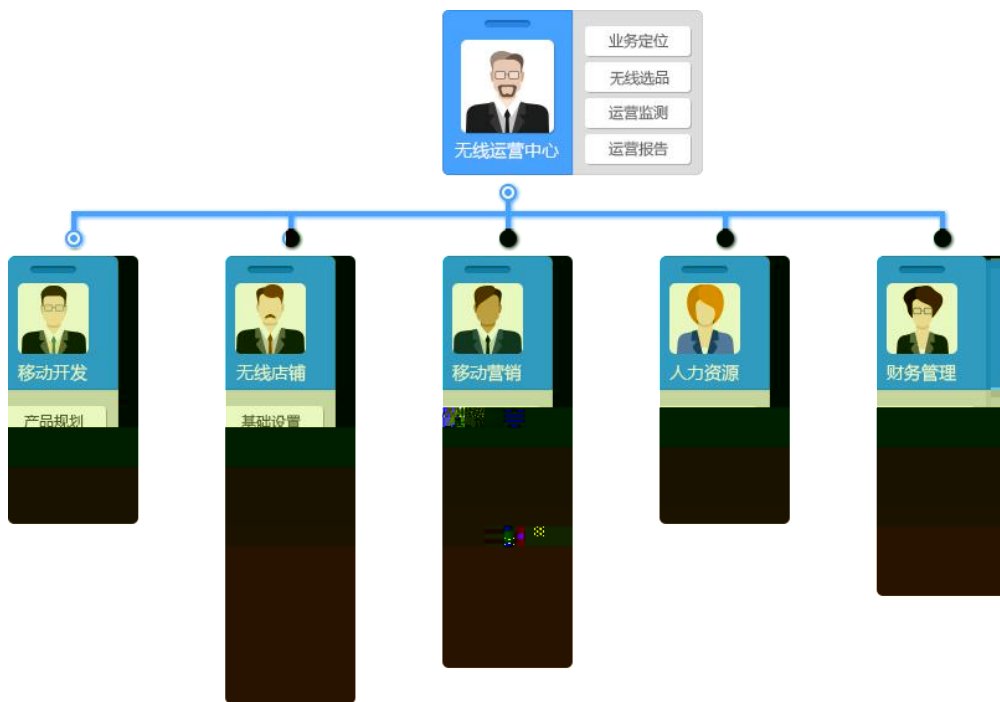
3-6



7. 3-7

1  
1

200



2

4

选品参考数据：市场交易热度

圈越大表示该品类商品越热销





4

\*\*\*\*\*

\*\*\*\*\*

\*\*\*\*\*

5

APP

6

200

2

	172. 16. 0. 131/	
		48
		3 1

3

90

4

3-7

3-7

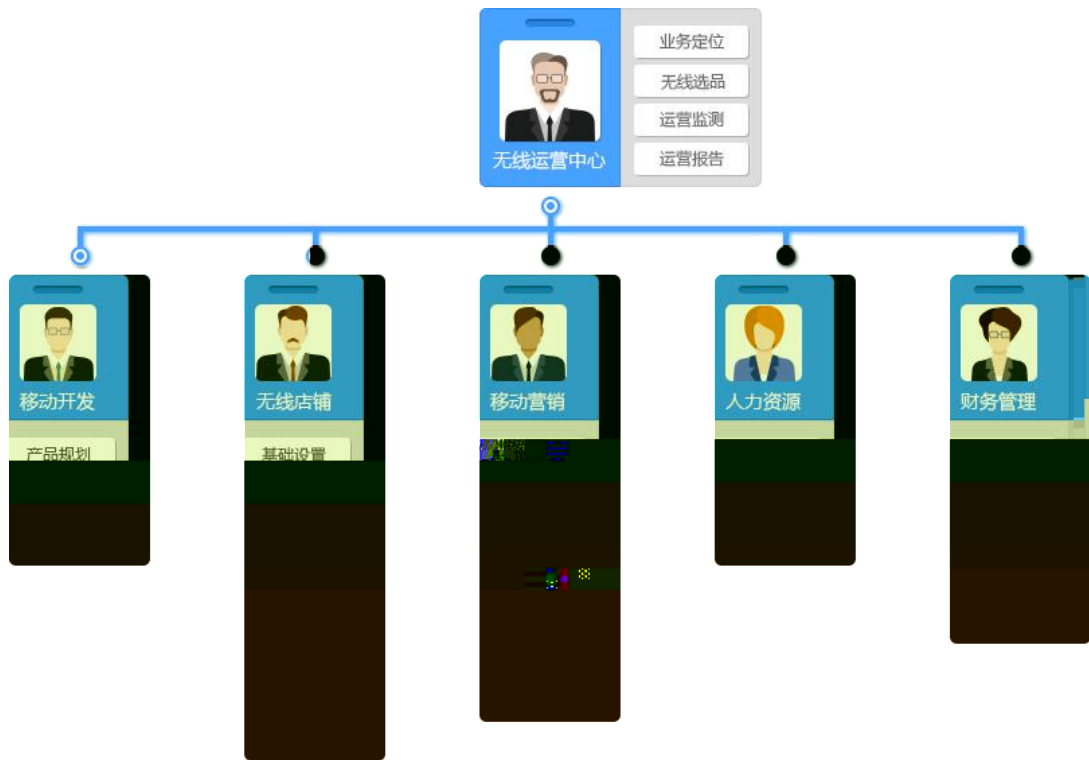
10	10	6S	
		3 /3 /4	
90			
		10	A 2 2 2 4
		10	5 5
		10	5 2 3
	APP	15	5 10
		15	5 10
		10	5 5
		10	5 3 2
		10	5 5
		100	

8.

3-8

1  
1

200

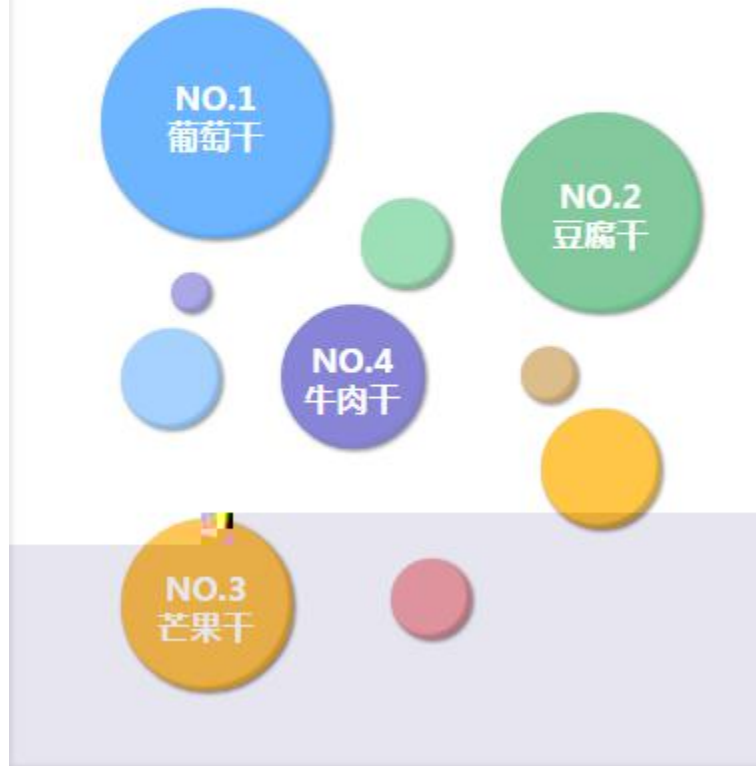


2

4

选品参考数据：市场交易热度

! 圈越大表示该品类商品越热销





4

\*\*\*

\*\*\*\*\*

\*\*\*\*\*

5

APP

6

200

1



2

	172.16.0.131/	
	48	
	3 1	

3

90

4

3-8

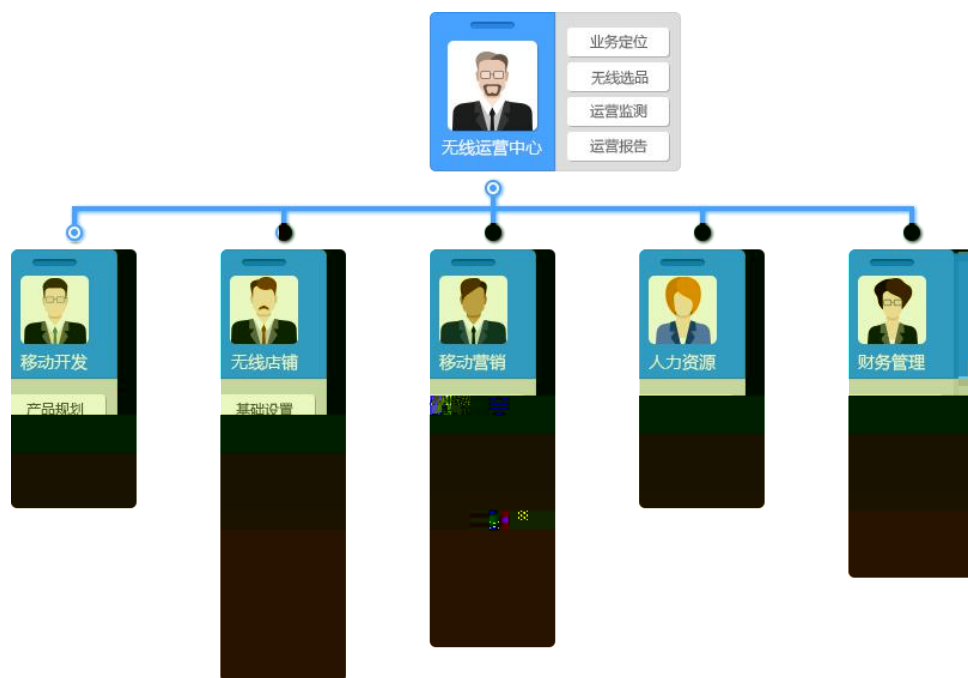
3-8

10	10	6S 3 /3 /4	
90			
		10	A 2 2 2 4
		10	5 5
		10	5 2 3
	APP	15	5 10
		15	5 10
		10	5 5
		10	5 3 2
		10	5 5
		100	

9. 3-9

1  
1

200



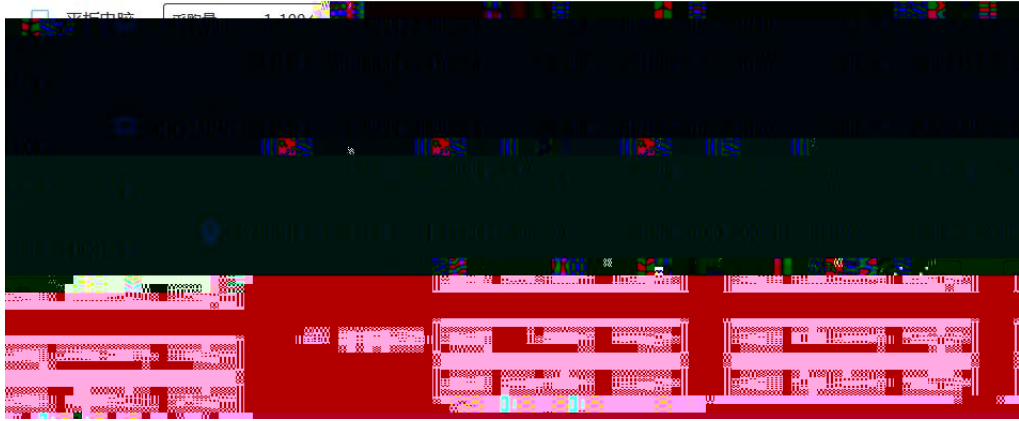
2

4

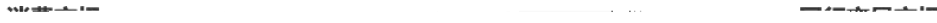
选品参考数据：市场交易热度

 圈越大表示该品类商品越热销





4



5

APP

6

200

1

2

	172. 16. 0. 131/	
	48	
	3 1	

3

90

4

3-9

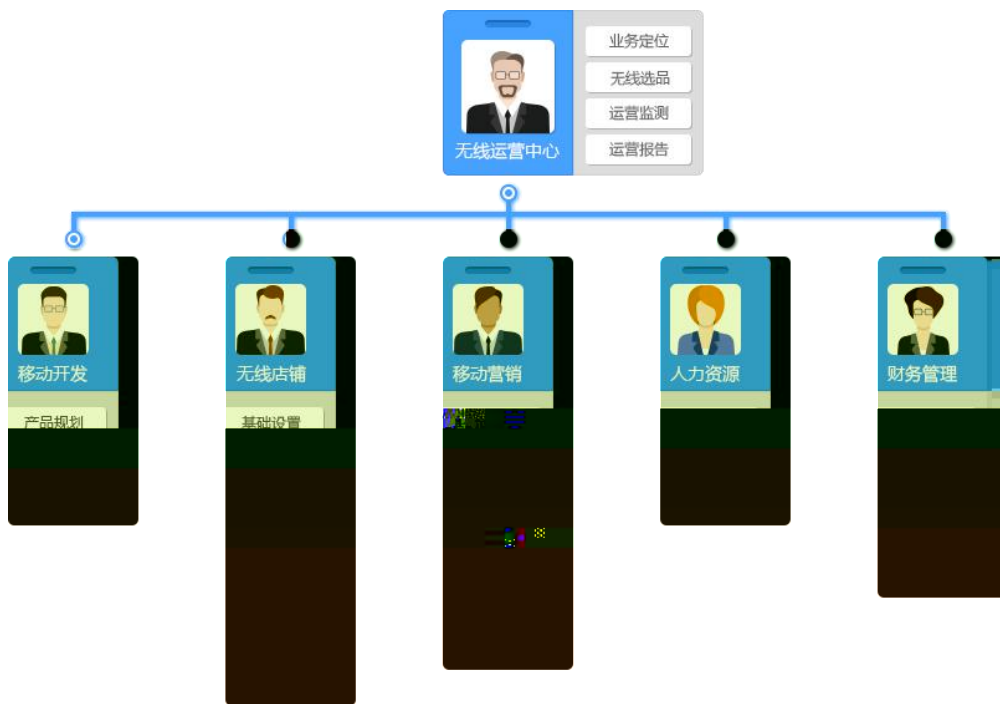
3-9

10	10	6S 3 /3 /4	
90			
		10	A 2 2 2 4
		10	5 5
		10	5 2 3
	APP	15	5 10
		15	5 10
		10	5 5
		10	5 3 2
		10	5 5
		100	

10. 3-10

1  
1)

200



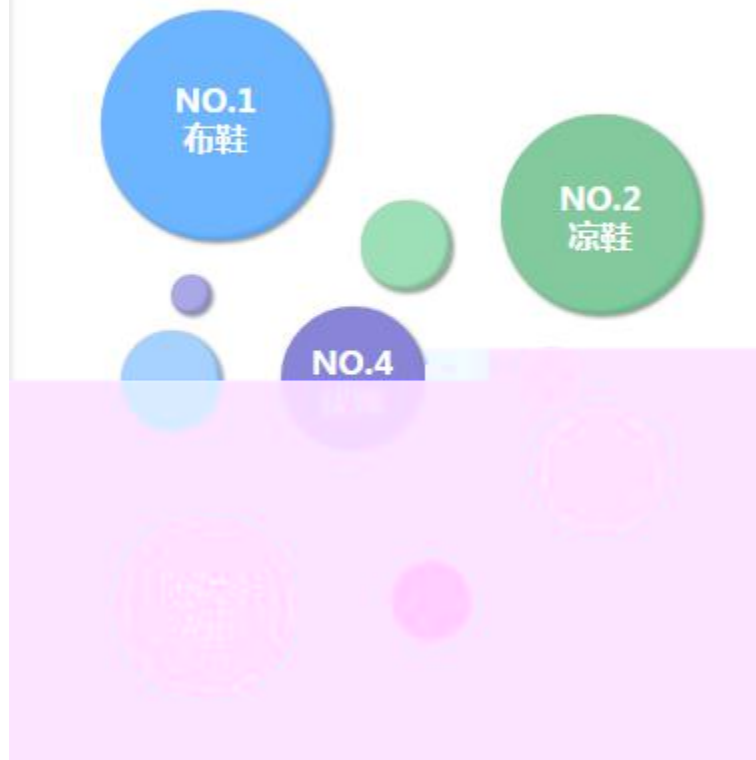
2)

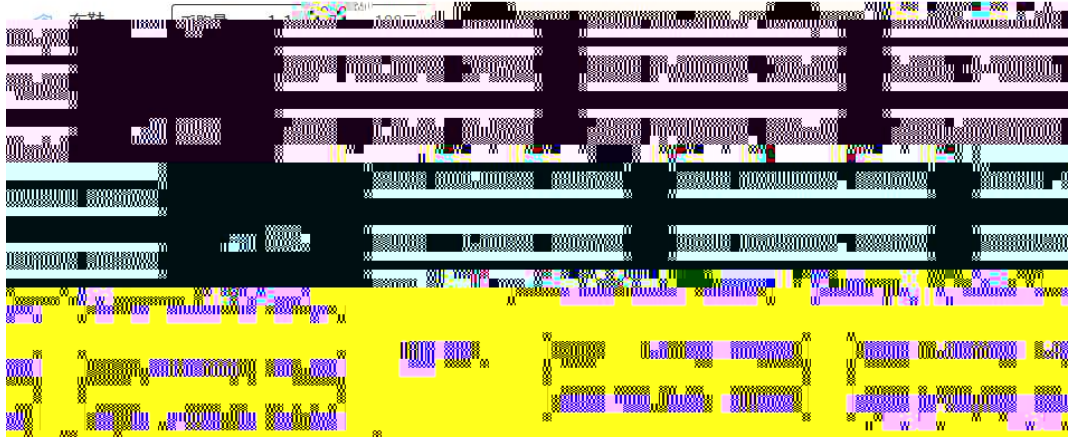
4



### 选品参考数据：市场交易热度

 圈越大表示该品类商品越热销





4)

5

APP

6

2

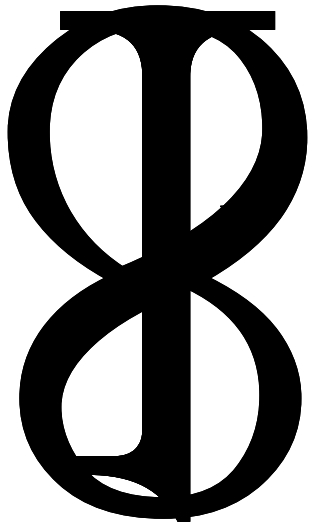
	172. 16. 0. 131/	
	48	
	3 1	

3

90

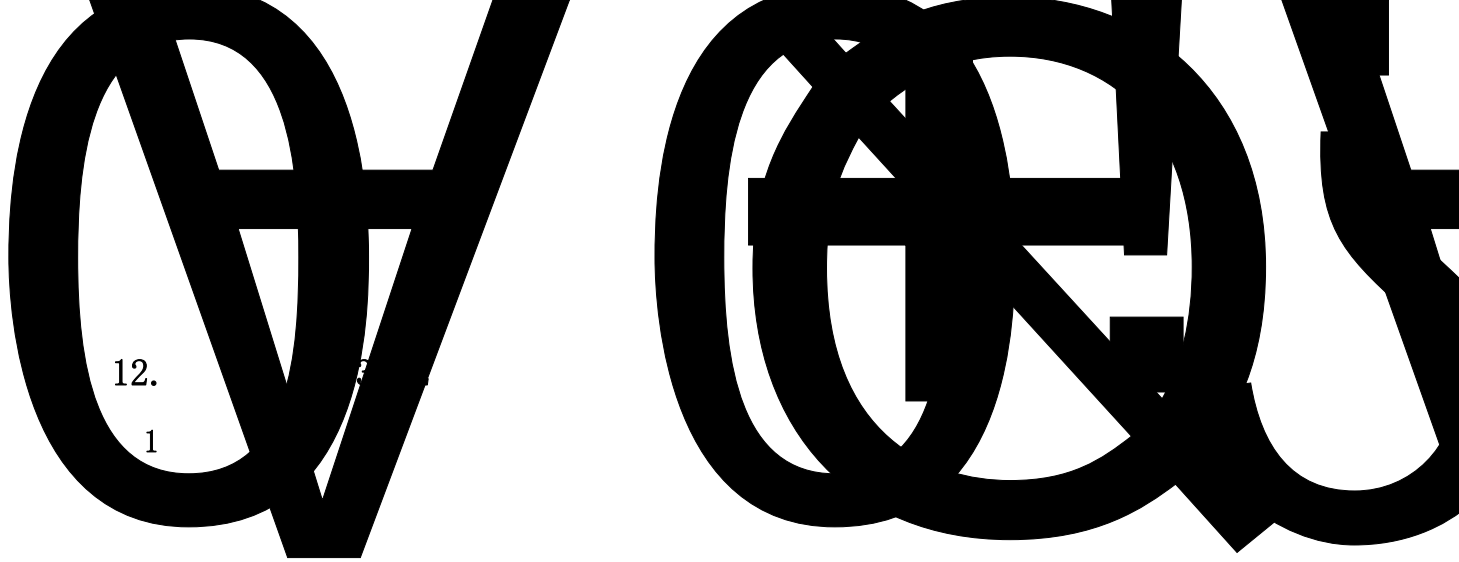
4

10	10	6S 3 /3 /4	
90	10	A 2 2 2 4	
	10	5 5	
	10	5 2 3	
	APP	5 10	
	15	5 10	
	10	5 5	
	10	5 3 2	
	10	5 5	
	100		



3.

(10 )	10	/4 /6 /10	0
(90 )	10	120*120	
		0 /4 /6 /8 /10	
	5	50	
		0 /1 /2 /3 /4 /5	
	5		
		0 /1 /2 /3 /4 /5	
	5	1 2	2
	20	150 618	
		0 /5 /10 /15/20	
	20	1	
	200		
	0 /5 /10 /15/20		
3G	5		
	20		
		0 /5 /10 /15/20	
	100		



12.

1

1

2

3

:

(10 )	10	/4 /6 /10	0
(90 )	10	120*120 0 /4 /6 /8 /10	
	5	50 0 /1 /2 /3 /4 /5	
	5	0 /1 /2 /3 /4 /5	
	5	1 2	2
	20	150 618 0 /5 /10 /15/20	
	20	1 200 0 /5 /10 /15/20	
	3G	5	
		20	0 /5 /10 /15/20
	100		



13. 3-13

1

1

2

3 :

4

5 6.18 11

1

11 6.18

6

1

200

7 3G 10 3G

8

2

7 8 0 2007 P

CS6.0

GOOGLE48

://172.16.0.131/ /

3

(10 )	10	/4 /6 /10	0	
(90 )	10	120*120 0 /4 /6 /8 /10		
	5	50 0 /1 /2 /3 /4 /5		
	5	0 /1 /2 /3 /4 /5		
	5	1 2	2	
		150 618 0 /5 /10 /15/20		
	20	1 200 0 /5 /10 /15/20		
	3G	5		
		20	0 /5 /10 /15/20	
	100			

14. 3-14

1

1

2

3 :

4

5 6.18 11

1

11 6.18

6

1

200

7 3G 10 3G

8

2

7 8 0 2007 P

CS6.0 GOOGLE48

://172.16.0.131/ /

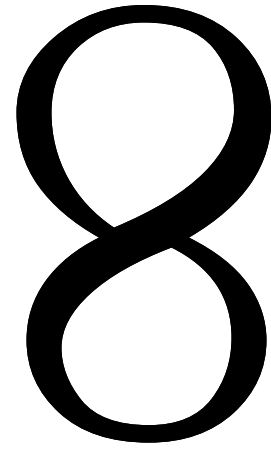
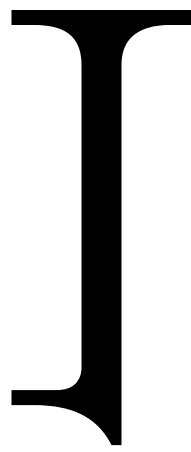
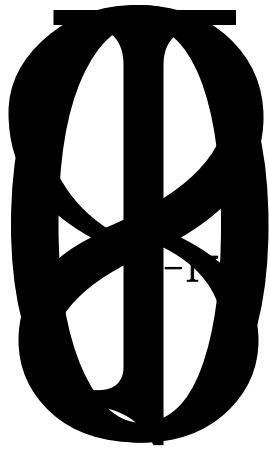
3

90

(10 )	10	/4 /6 /10	0
(90 )	10	120*120	
		0 /4 /6 /8 /10	
	5	50	
		0 /1 /2 /3 /4 /5	
	5		
		0 /1 /2 /3 /4 /5	
	5	1 2	2
	20	150 618	
		0 /5 /10 /15/20	
	20	1	
	200		
	0 /5 /10 /15/20		
3G	5		
	20		
		0 /5 /10 /15/20	
	100		

15.

1



1

2

3

:

4

5

6.18

11

1

11

6.18

6

1

200

7 3G

10

3G

8

2

7

8

0

2007

P

(10 )	10	/4 /6 /10	0
(90 )	10	120*120	
		0 /4 /6 /8 /10	
	5	50	
		0 /1 /2 /3 /4 /5	
	5		
		0 /1 /2 /3 /4 /5	
	5	1 2	2
	20	150 618	
		0 /5 /10 /15/20	
	20	1	
	200		
	0 /5 /10 /15/20		
3G	5		
	20		
		0 /5 /10 /15/20	
	100		

16. 3-16

1

1

2

3 :

4

5 6.18 11

1

11 6.18

6

1

200

7 3G 10 3G

8

2

7 8 0 2007 P

CS6.0

GOOGLE48

://172.16.0.131/ /

3

90

(10 )	10	/4 /6 /10	0
(90 )	10	120*120	
		0 /4 /6 /8 /10	
	5	50	
		0 /1 /2 /3 /4 /5	
	5		
		0 /1 /2 /3 /4 /5	
	5	1 2	2
	20	150 618	
		0 /5 /10 /15/20	
	20	1	
	200		
	0 /5 /10 /15/20		
3G	5		
	20		
		0 /5 /10 /15/20	
	100		



17. 3-17

1

1

2

3 :

4

5 6.18 11

1

11 6.18

6

1

200

7 3G 10 3G

8

2

7 8 0 2007 P

CS6.0 GOOGLE48

://172.16.0.131/ /

3

90

(10 )	10	/4 /6 /10	0	
(90 )	10	120*120 0 /4 /6 /8 /10		
	5	50 0 /1 /2 /3 /4 /5		
	5	0 /1 /2 /3 /4 /5		
	5	1	2	2
		20	150 618 0 /5 /10 /15/20	
		20	1 200 0 /5 /10 /15/20	
	3G	5		
		20	0 /5 /10 /15/20	
		100		

18. 3-18

1

1

2

3 :

4

5 6.18 11

1

11 6.18

6

1

200

7 3G 10 3G

8

2

7 8 0 2007 P

CS6.0

GOOGLE48

://172.16.0.131/ /

3

90

(10 )	10	/4 /6 /10	0
(90 )	10	120*120	
		0 /4 /6 /8 /10	
	5	50	
		0 /1 /2 /3 /4 /5	
	5		
		0 /1 /2 /3 /4 /5	
	5	1 2	2
	20	150 618	
		0 /5 /10 /15/20	
	20	1	
	200		
	0 /5 /10 /15/20		
3G	5		
	20		
		0 /5 /10 /15/20	
	100		

19. 3-19

1

1

2

3 :

4

5 6.18 11

1

11 6.18

6

1

200

7 3G 10 3G

8

2

7 8 0 2007 P

CS6.0 GOOGLE48

://172.16.0.131/ /

3

90

(10 )	10	/4 /6 /10	0
(90 )	10	120*120	
		0 /4 /6 /8 /10	
	5	50	
		0 /1 /2 /3 /4 /5	
	5		
		0 /1 /2 /3 /4 /5	
	5	1 2	2
	20	150 618	
	0 /5 /10 /15/20		
20	1		
	200		
	0 /5 /10 /15/20		
3G	5		
	20		
		0 /5 /10 /15/20	
	100		

20. 3-20

1

1

2

3 :

4

5 6.18 11

1

11 6.18

6

1

200

7 3G 10 3G

8

2

7 8 0 2007 P

CS6.0

GOOGLE48

://172.16.0.131/

/

3

90

(10 )	10	/4 /6 /10	0
(90 )	10	120*120	
		0 /4 /6 /8 /10	
	5	50	
		0 /1 /2 /3 /4 /5	
	5		
		0 /1 /2 /3 /4 /5	
	5	1 2	2
	20	150 618	
		0 /5 /10 /15/20	
	20	1	
	200		
	0 /5 /10 /15/20		
3G	5		
	20		
		0 /5 /10 /15/20	
	100		



1. 4-1

1

1

7

1000

.

.

2010 4

5000

+

+

+

2

a.

---

b.

50

---

---

---

c.

10

---

d.

50

1		

e.

100

1		
2		
3		

f.

400

1			
2			
3			

g.


h.


3

2

7 8 0 2007 H S

3

60

4

( 4-1)

4-1

	10	6S 0 /3 /5 0 /3 /5	
	5		
	5	1	10
	5	2 1	
	5		2
	10	3 10 1	
	10	4 6 20	
	40	1	
	40	4 36	
	10	40 1	
	10		2
		8	
	10		2 8
	100		

2.

4-2

1

1

[www.168gld.com](http://www.168gld.com)

1997 3 20

500

2017

2500

2

d.

50

1		

e.

100

1		
2		
3		

f.

400

1			
2			
3			

g.


h.


3

2

3

60

4

( 4-2)

4-2

	10	6S 0 /3 /5 0 /3 /5	
	5		
	5	1	10
	5	2 1	
	5		2
	10	1	3 10 1
	10	1	4 6 20
	40	40 1	4 36
	10		8 2
10		2 8	
	100		

3. 4-3

1  
1

www.hnaijia.cn

1200

2014 03 18

49

17

4508

2

a.

---

b.

50

---

---

---

c.

10

---

d.

50

1		

e.

100

1		

2		
3		

f.

400

1			
2			
3			

g.


h.


3

2

7 8 0 2007 H S

3

60

4

( 4-3)



4-3

	10	6S 0 /3 /5 0 /3 /5	
	5		
	5	1	10
	5	2 1	
	5		2
	10	1	3 10 1 4 6 20
	40	40 1	4 36
	10		2 8
	10		2 8
	100		

4. 4-4

1  
1

www.hnxffs.com

1996

AAA	2011		21
		58	5088
336		35	50
			66
20		165	

	CAD		2		6
		7			
	41				

		1996		
	2008	ISO9001		ISO14001
2011				
( )				

2

a.

---

b.

50

---



---



---

c. 10

d.

50

1		

e.

100

1		
2		
3		

f.

400

1		
2		
3		

g.


h.


3

2

7 8 0 2007 H S

3

60

4

( 4-4)

**4-4**

	10	6S 0 /3 /5 0 /3 /5	
	5		
	5	1	10
	5	2 1	
	5		2 3 10 1
	10	1	4 6 20
	40	40 1	4 36
	10		2 8
	10		2 8
	100		

5. 4-5

1  
1

www.cschanglong.com 1985  
2007

2007  
A 2008  
2012

2011 fs.changsha.cn  
2012

2

a.

---

b.

50

---

---

c.

10

---

d.

50

1		

e.

100

1		
2		
3		

f.

400

1			
2			
3			

g.


h.


3

2

3

60

4

( 4-5)

4-5

	10	6S 0 /3 /5 0 /3 /5	
	5		
	5	1	10
	5	2 1	
	5		2
	10	1	3 10 1
	10	1	4 6 20
	40	40 1	4 36
	10		2
10		8	
10		2 8	
	100		

6. 4-6

1  
1

<http://www.and169.com>

2006

5000

2

a.

---

b.

50

---

---

---

c.

10

---

d.

50

1		

e.

100



1		
2		
3		

f.

400

1			
2			
3			

g.


h.


3

2

7 8 0 2007 H S

3

60

4

( 4-6)

4-6

	10	6S 0 /3 /5 0 /3 /5	
	5		
	5	1	10
	5	2 1	
	5		2
	10	3 10 1	
	10	4 6 20	
	40	1	
	40	4 36	
	10	40 1	
	10		2
		8	
	10		2 8
	100		

7. 4-7

1  
1

<http://www.csqstx.com>

-

2

a.

---

b.

50

---

---

---

c.

10

---

d.

50

1		

e.

100

1		
2		
3		

f.

400

1			
2			
3			

g.


h.


3

2

7 8 0 2007 H S

3

60

4

( 4-7)

4-7

	10	6S 0 /3 /5 0 /3 /5	
	5		
	5	1	10
	5	2 1	
	5		2
	10	3 10 1	
	10	4 6 20	
	40	1	
	40	4 36	
	10	40 1	
	10		2
		8	
	10		2 8
	100		

8. 4-8

1  
1

<http://www.cstycb.com>

2016

10

2

a.

---

b.

50

---

---

c.

10

---

d.

50

1		

e.

100

1		
2		
3		

f.

400

1			
2			
3			

g.


h.


3

2

7 8 0 2007 H S

3

60

4

( 4-8)

4-8

	10	6S 0 /3 /5 0 /3 /5	
	5		
	5	1	10
	5	2 1	
	5	3 10 1	2
	10	4 6 20	1
	40	40 1 4 36	
	10	8	2
	10	2 8	
	100		



9. 4-9

1  
1

2016 3 22

3000

20

2

a.

---

b. 50

---

---

---

c. 10

---

d.

50

1		

e.

100

1		
2		
3		

f.

400

1			
2			
3			

g.


h.


3

2

7 8 0 2007 H S

3

60

4

( 4-9

4-9

	10	6S 0 /3 /5 0 /3 /5	
	5		
	5	1	10
	5	2	1
	5	2	3 10 1
	10	20 1	4 6
	40	40 1	4 36
	10		8 2
	10		2 8
	100		

10. 4-10

1  
1

www.bidanxi.com 2010 2012

3

21

50

2

a.

---

b.

50

---

---

c.

10

---

d.

50

1		

e.

100

1		
2		
3		

f.

400

1			
2			
3			

g.


h.


3

2

7 8 0 2007 H S

3

( 4-10)

## 4-10

	10	6S 0 /3 /5 0 /3 /5	
	5		
	5	1	10
	5	2 1	
	5	2 3 10 1	
	10	20 1 4 6	
	40	40 1 4 36	
	10	8 2	
	10	2 8	
	100		

1. 5-1

1

1

58

1150 520 76900 9 30-  
12 30 14 00-18 30 19 30-23 00

2

3

2

7 8 0 2010

3

60

4

( 5-1)

5-1

10	10	◆	5	600	
		◆	20 1		
			5		
	10	◆		2	1.
		◆		2	200
		◆		3	1
		◆	3		2.
		◆	5	4	30000 1
	20	1.	2		3
		2.			20
		10	2		1
		20			4.
90		◆	10		35
		◆		10	5.
	40	◆	10		
		◆		10	
		◆			1
			1-4		
	20	◆	4		
			1 5 20		
			100		



2. 5-2

1

1

68

780

405

77030

9 30-12 00 13 00-18:00 19:00- 22 30

2

:

2

7 8 0 2010

3

60

4

( 5-2)

5-2

10	10	◆	5	600	
		◆	20 1		
			5		
	10	◆		2	1.
		◆		2	200
		◆		3	1
		◆	3		2.
		◆	5	4	30000 1
	20	1.	2		3
		2.			20
		10	2		1
		20			4.
90		◆	10		35
		◆		10	5.
	40	◆	10		
		◆		10	
		◆			1
			1-4		
	20	◆	4		
			1 5 20		
			100		

3. 5-3

1

1

48

980

268

300000

10 00-14 00 16 00-23 00

2

:

2

7 8

0 2010

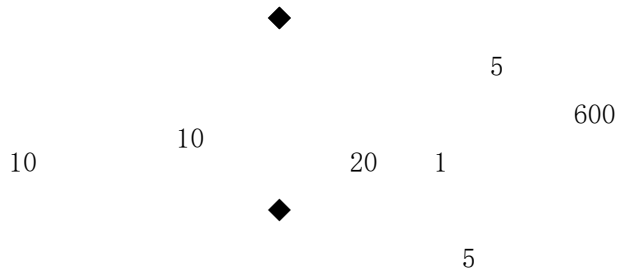
3

60

4

( 5-3)

5-3



1. 200

1

2.

30000 1

3

20

1

4.

35

5.

1

4. 5-4

1

1

68

1600

560

38900

8 30-12 00 14 00-17

30 18 30-22 30

2

:

2

7 8 0 2010

3

60

4

( 5-4)

5-4

10	10	◆	5	600	
		◆	20 1		
			5		
	10	◆		2	1.
		◆		2	200
		◆		3	1
		◆	3		2.
		◆	5	4	30000 1
	20	1.	2		3
		2.			20
		10	2		1
		20			4.
90		◆	10		35
		◆		10	5.
	40	◆	10		
		◆		10	
		◆			1
			1-4		
	20	◆	4		
			1 5 20		
			100		

5. 5-5

1

1

T

145

1500

732

13500

9 30-12 30 14 00-18 30 19 30-23

00

2

:

2

7 8

0 2010

3

60

4

( 5-5)

5-5

10	10	◆	5	600	
		◆	20 1		
			5		
	10	◆		2	1.
		◆		2	200
		◆		3	1
		◆	3		2.
	20	◆	5	4	30000 1
			1.	2	3
			2.		20
			10	2	1
			20		4.
90	40	◆	10		35
		◆		10	5.
		◆	10		
		◆		10	
		◆			1
			1-4		
	20	◆	4		
			1	5	20
			100		



6. 5-6

1

1

2004

200

980

125

215000

9 30-12 30 14 00-18 30 19 30-23 00

2

:

2

7 8 0 2010

3

60

4

( 5-6)

5-6

10	10	◆	5	600	
		◆	20 1		
			5		
	10	◆		2	1.
		◆		2	200
		◆		3	1
		◆	3		2.
		◆	5	4	30000 1
	20	1.	2		3
		2.			20
		10	2		1
		20			4.
90		◆	10		35
		◆		10	5.
	40	◆	10		
		◆		10	
		◆			1
			1-4		
	20	◆	4		
			1 5 20		
			100		

7. 5-7

1

1

65

780

110

340000

10 00-14 00 16 00-23 00

2

:

2

7 8

0 2010

3

60

4

( 5-7)

5-7

10	10	◆	5	600	
		◆	20 1		
			5		
	10	◆		2	1.
		◆		2	200
		◆		3	1
		◆	3		2.
		◆	5	4	30000 1
	20	1.	2		3
		2.			20
		10	2		1
		20			4.
90		◆	10		35
		◆		10	5.
	40	◆	10		
		◆		10	
		◆			1
			1-4		
	20	◆	4		
			1 5 20		
			100		

8. 5-8

1

1

170

260

870

26100

9 30-12 00 13 00-18:00 19:00- 22 30

2

:

2

7 8

0 2010

3

60

4

( 5-8)

5-8

10	10	◆	5	600	
		◆	20 1		
			5		
	10	◆		2	1.
		◆		2	200
		◆		3	1
		◆	3		2.
		◆	5	4	30000 1
	20	1.	2		3
		2.			20
		10	2		1
		20			4.
90		◆	10		35
		◆		10	5.
	40	◆	10		
		◆		10	
		◆			1
			1-4		
	20	◆	4		
			1 5 20		
			100		

9. 5-9

1

1

80

980

280

52750

10 00-14 00 16 00-23

00

2

:

2

7 8

0 2010

3

60

4

( 5-9)





10. 5-10

1

1

78

170

240

15600

8 30-12 00 14 00-17 30 18

30-22 30

2

:

2

7 8

0 2010

3

60

4

( 5-10)

5-10

10	10	◆	5	600	
		◆	20 1		
			5		
	10	◆		2	1.
		◆		2	200
		◆		3	1
		◆	3		2.
		◆	5	4	30000 1
	20	1.	2		3
		2.			20
		10	2		1
		20			4.
90		◆	10		35
		◆		10	5.
	40	◆	10		
		◆		10	
		◆			1
			1-4		
	20	◆	4		
			1 5 20		
			100		

